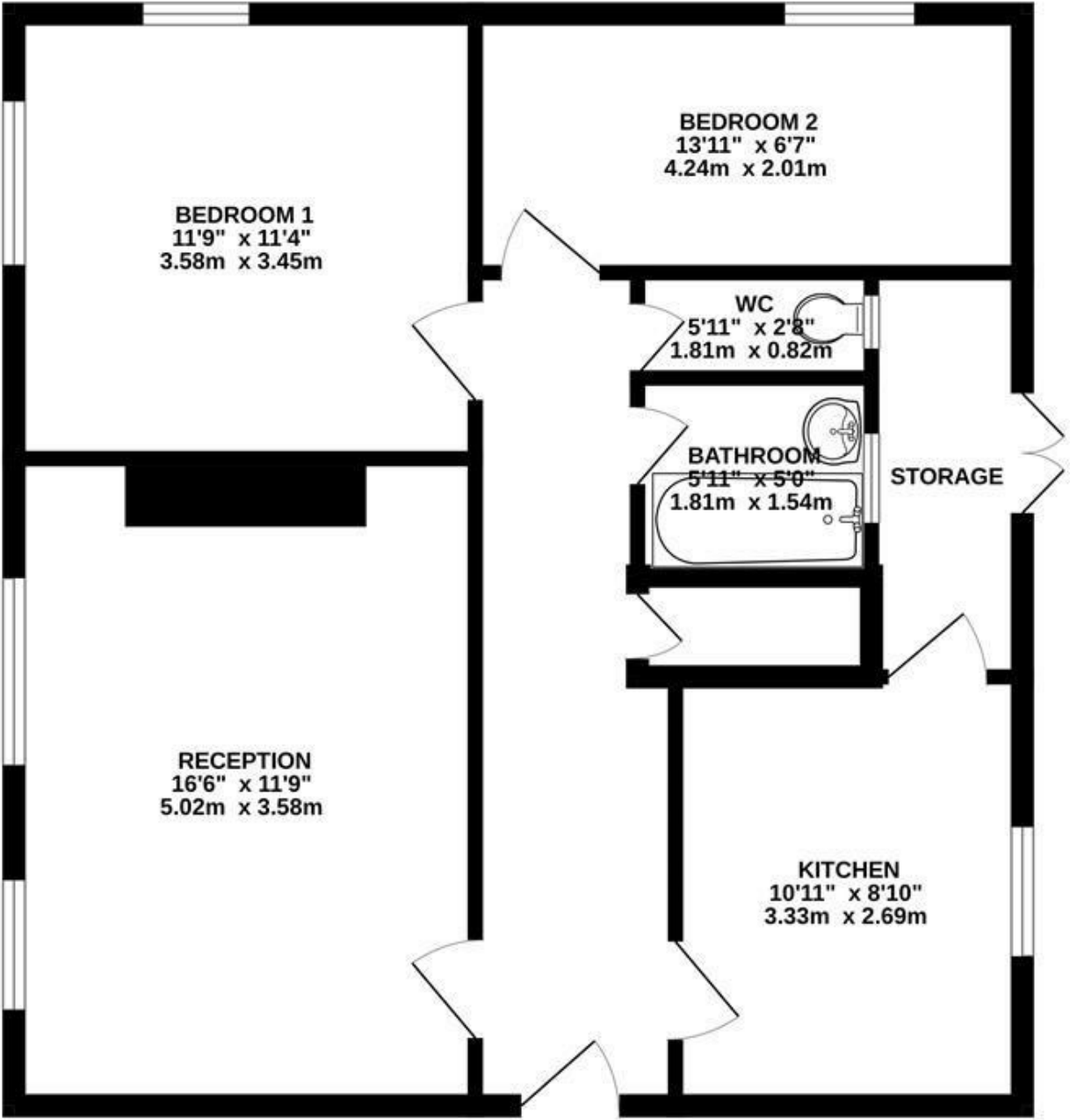


GROUND FLOOR
688 sq.ft. (63.9 sq.m.) approx.

GRAVITY
estates

Gravity Estates
18 Golders Green Road, NW11 8LL
02083570810
sales@gravity-estates.com
www.gravity-estates.com



Corbett Grove, London, N22 8DQ

Offers are invited on this 2 bedroom apartment situated on the ground floor of this purpose built block and within walking distance of Bounds Green Tube Station (Piccadilly Line) and less than a mile to Alexandra Park and Palace, with local amenities also within close proximity.

The apartment comprises a spacious lounge, separate fitted kitchen with large walk in storage room as well as further storage cupboards in the hallway, bathroom with separate w/c and 2 double bedrooms. The current tenants in situ are paying £1450pcm making this an ideal buy-to-let investment.

Leasehold

£335,000

Gravity Estates
18 Golders Green Road, London, NW11 8LL
02083570810 sales@gravity-estates.com

