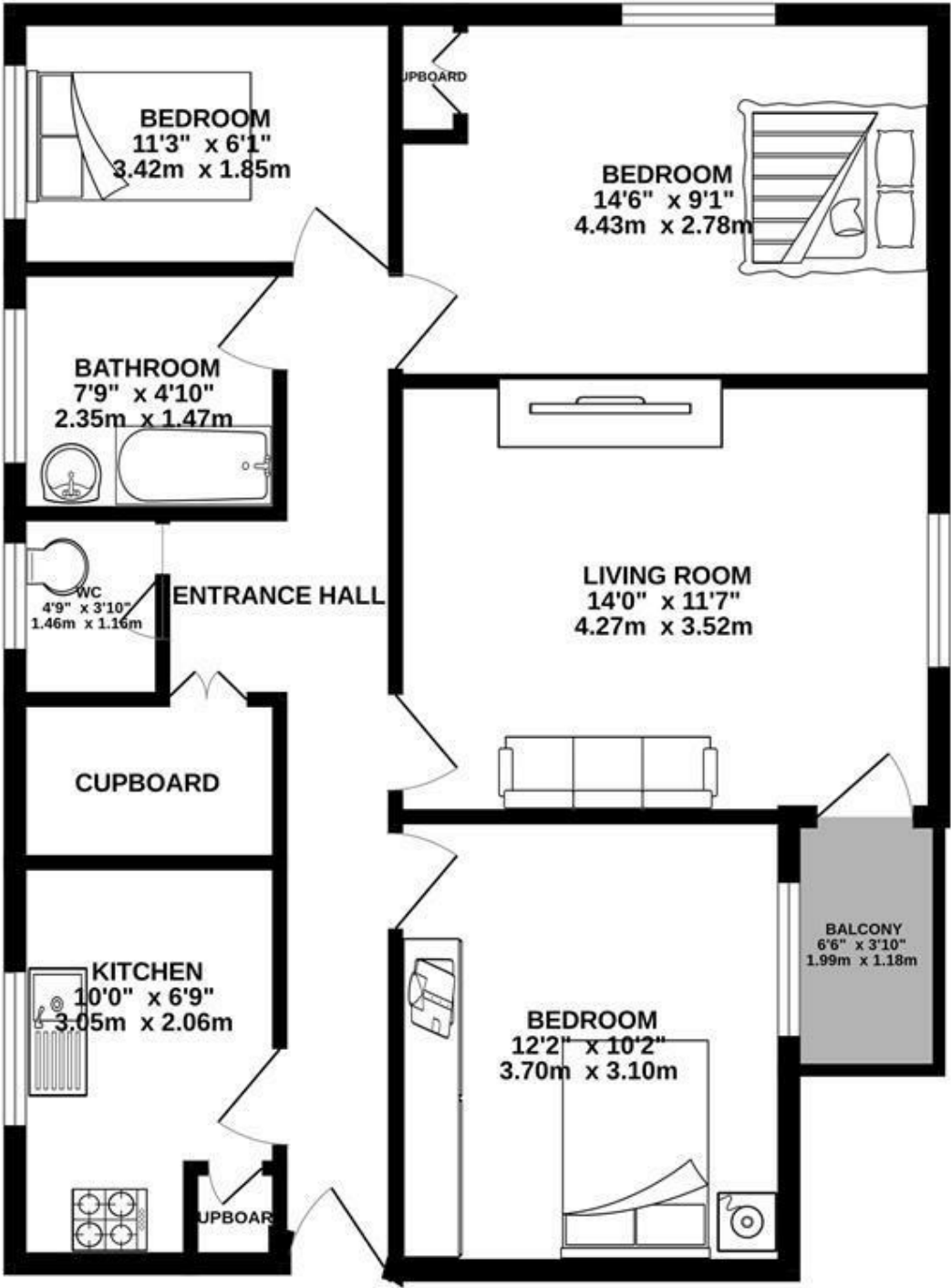


GROUND FLOOR
723 sq.ft. (67.2 sq.m.) approx.

GRAVITY
estates

Gravity Estates
18 Golders Green Road, NW11 8LL
02083570810
sales@gravity-estates.com
www.gravity-estates.com



TOTAL FLOOR AREA : 723 sq.ft. (67.2 sq.m.) approx.

Whilst every attempt has been made to ensure the accuracy of the floorplan contained here, measurements of doors, windows, rooms and any other items are approximate and no responsibility is taken for any error, omission or mis-statement. This plan is for illustrative purposes only and should be used as such by any prospective purchaser. The services, systems and appliances shown have not been tested and no guarantee as to their operability or efficiency can be given.
Made with Metropix ©2023



Kilburn Priory, London, NW6 5NE

A great Buy-To-Let investment.
A very well located 3 bed apartment on the 2nd floor of this purpose-built building, offering well-proportioned rooms, with views to green space from the kitchen, main bedroom and lounge, which also gives access to a private balcony.

This property boasts a superb location, moments from the wide range of amenities which can be found along Kilburn High Road, Maida Vale, St John's Wood, and Little Venice. The open spaces of Paddington Recreation Ground are also within easy reach, as well as Regents Park and Hyde Park. The closest stations are Kilburn High Road (Overground) and Kilburn Park (Bakerloo).

Leasehold

£525,000

Gravity Estates
18 Golders Green Road, London, NW11 8LL
02083570810 sales@gravity-estates.com

