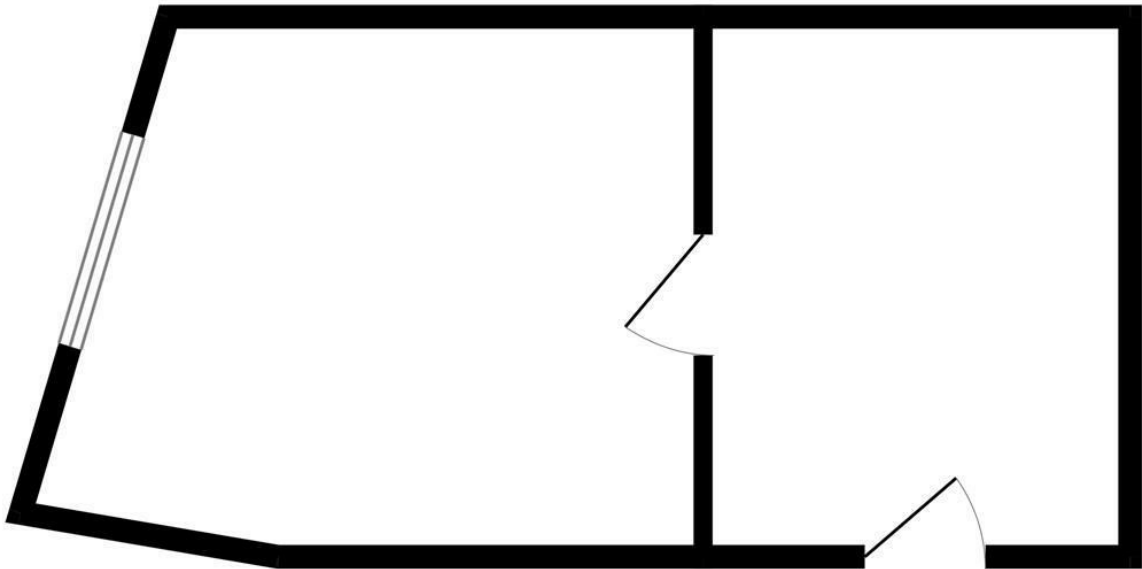


GROUND FLOOR
231 sq.ft. (21.5 sq.m.) approx.



ST ALBANS OFFICE
TOTAL FLOOR AREA: 231 sq.ft. (21.5 sq.m.) approx.
Whilst every attempt has been made to ensure the accuracy of the floorplan contained here, measurements of doors, windows, rooms and any other items are approximate and no responsibility is taken for any error, omission or mis-statement. This plan is for illustrative purposes only and should be used as such by any prospective purchaser. The services, systems and appliances shown have not been tested and no guarantee as to their operability or efficiency can be given.
Made with Metropix ©2024



St Albans Lane, Golders Green, London NW11 7QE

Rent £625 Per Month

Sq Ft: 231

Very Good location, Golders Green Tube Station is 1 minutes Walk

1 Open Single Reception Room on the First Floor, the wall in the middle has been removed.

The Service Charge is covered by the rent however the bills would be paid separately

Available Now

£625 Per month

