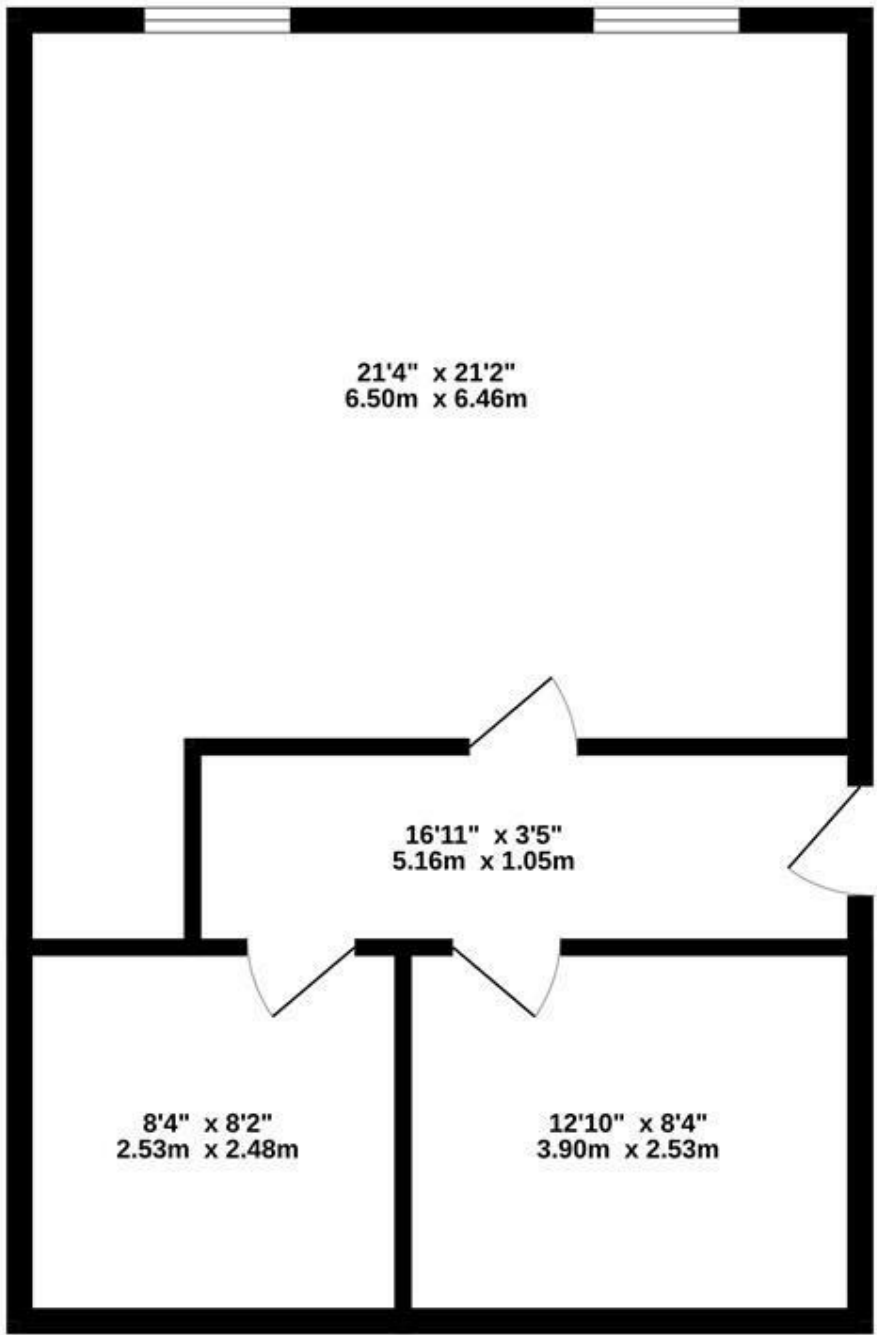


FIRST FLOOR
646 sq.ft. (60.0 sq.m.) approx.



OFFICES
TOTAL FLOOR AREA : 646 sq.ft. (60.0 sq.m.) approx.
Whilst every attempt has been made to ensure the accuracy of the floorplan contained here, measurements of doors, windows, rooms and any other items are approximate and no responsibility is taken for any error, omission or mis-statement. This plan is for illustrative purposes only and should be used as such by any prospective purchaser. The services, systems and appliances shown have not been tested and no guarantee as to their operability or efficiency can be given.
Made with Metropix ©2024

Gravity Estates
18 Golders Green Road, London, NW11 8LL
02083570810 sales@gravity-estates.com

GRAVITY
estates

Gravity Estates
18 Golders Green Road, NW11 8LL
02083570810
sales@gravity-estates.com
www.gravity-estates.com



St Albans Lane, Golders Green, London NW11 7QE

Welcome to this property located on St Albans Lane in the sought-after area of Golders Green. This spacious office space boasts 646 square feet, providing ample room for your business needs.

With two reception rooms, this property offers versatility in its layout, allowing you to create separate work areas or meeting spaces as required. The potential for refurbishment gives you the opportunity to tailor the space to your preferences, whether you choose to take on the task yourself or work with the landlord to create your ideal office environment.

Conveniently situated next to Golders Green station, commuting to and from work will be a breeze, ensuring easy access for both employees and clients.

Contact us today to arrange a viewing and take the first step towards making this office your own.

£1,200 Per month

