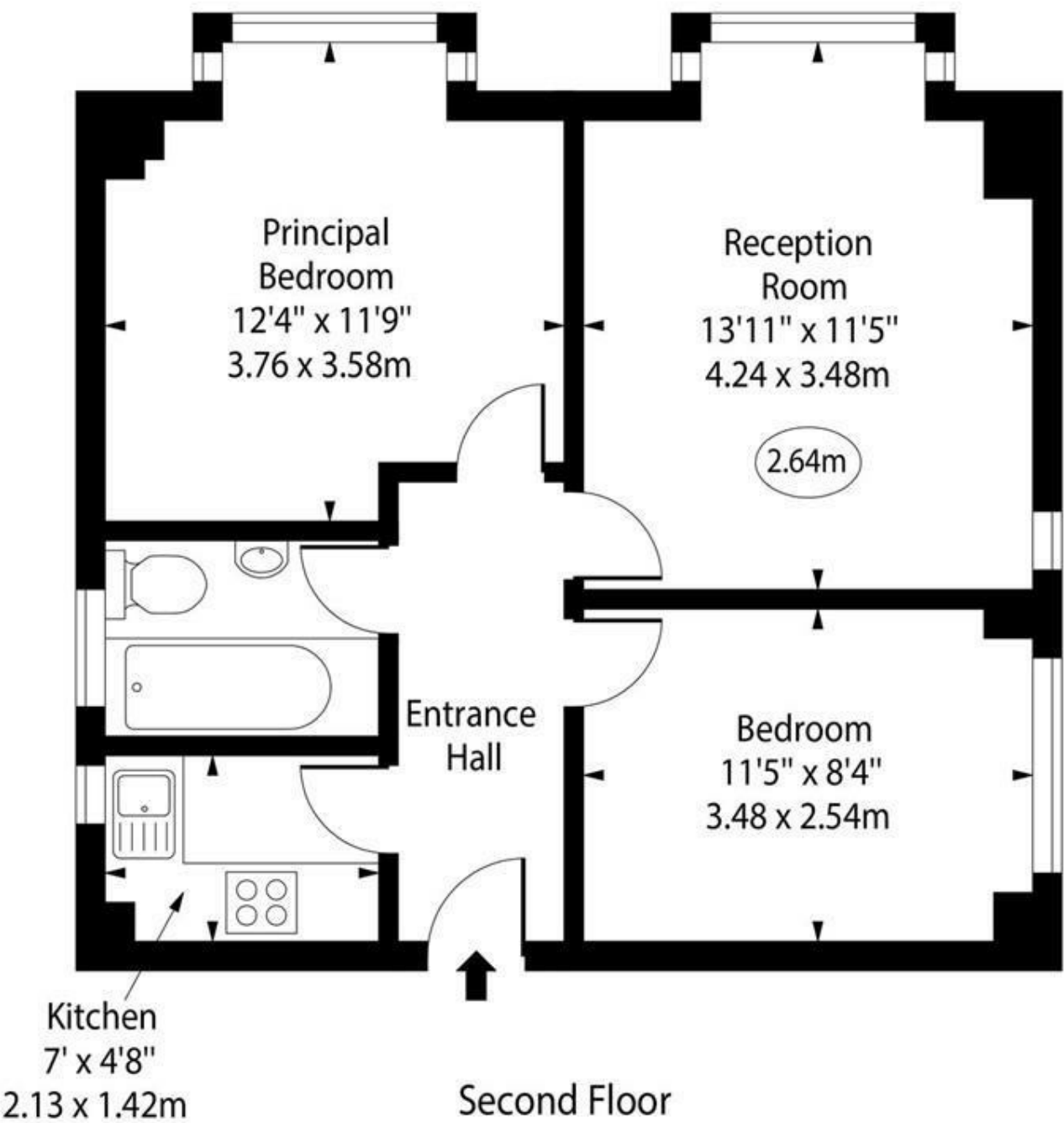


Westbourne Court,  
Orsett Terrace, W2



○ - Ceiling Height



Approx Gross Internal Area      520 Sq Ft - 48.31 Sq M  
For Illustration Purposes Only - Not To Scale  
[www.goldlens.co.uk](http://www.goldlens.co.uk)  
Ref. No. 021704AN

Gravity Estates  
18 Golders Green Road, London, NW11 8LL  
02083570810    [sales@gravity-estates.com](mailto:sales@gravity-estates.com)

GRAVITY  
estates

Gravity Estates  
18 Golders Green Road, NW11 8LL  
02083570810  
[sales@gravity-estates.com](mailto:sales@gravity-estates.com)  
[www.gravity-estates.com](http://www.gravity-estates.com)



Orsett Terrace, London, W2 6AJ

A beautiful 2 bedroom, 1 bath apartment with spacious reception room located in Westbourne Court, Orsett Terrace, W2.

The property is located on the second floor of a period building, close to Queensway area and within a 10 minute walk of Paddington Station.

The flat is accessible via the lift and the building has a day porter.

Heating costs included in the annual service charge.

Leasehold

£639,995



