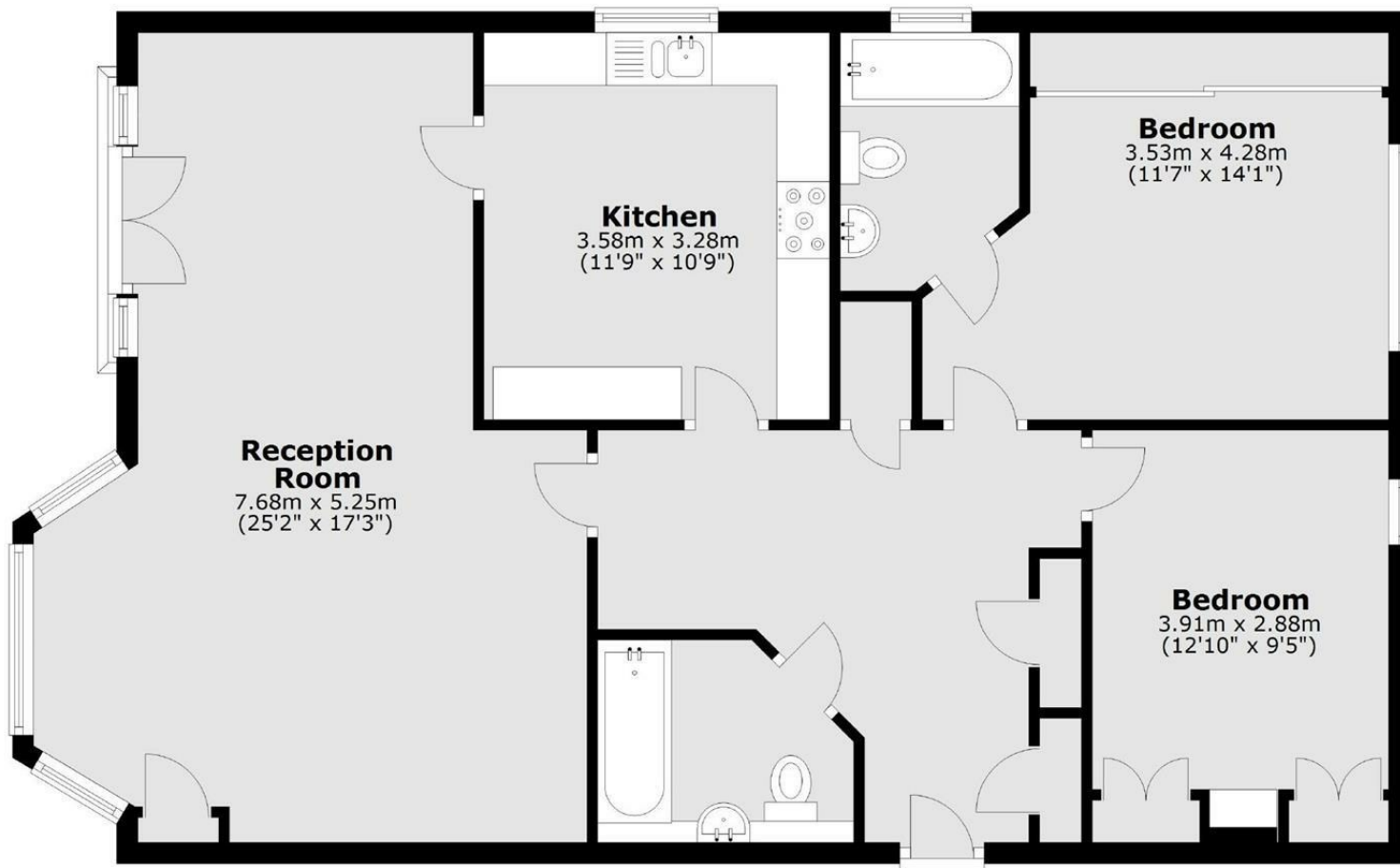


**First Floor**



Total area: approx. 93.7 sq. metres (1008.5 sq. feet)



**Finchley Lane, London, NW4 1BW**

A newly renovated and very spacious 2 bed 2 bath first floor apartment situated in this attractive purpose built building, with lift access.

Comprising a spacious entrance hall, leading to very spacious reception room with Juliet balcony, and fitted kitchen, 2 double bedrooms (1 with ensuite bathroom) and large family bathroom, also benefitting plenty of storage throughout.

This popular block is located on the corner of Tenterden Gardens and within easy access of Brent Street's shopping and transport facilities.

The property further benefits, communal gardens, secure underground parking, lift access and is offered chain free.

Leasehold - Share of Freehold

**£850,000**



