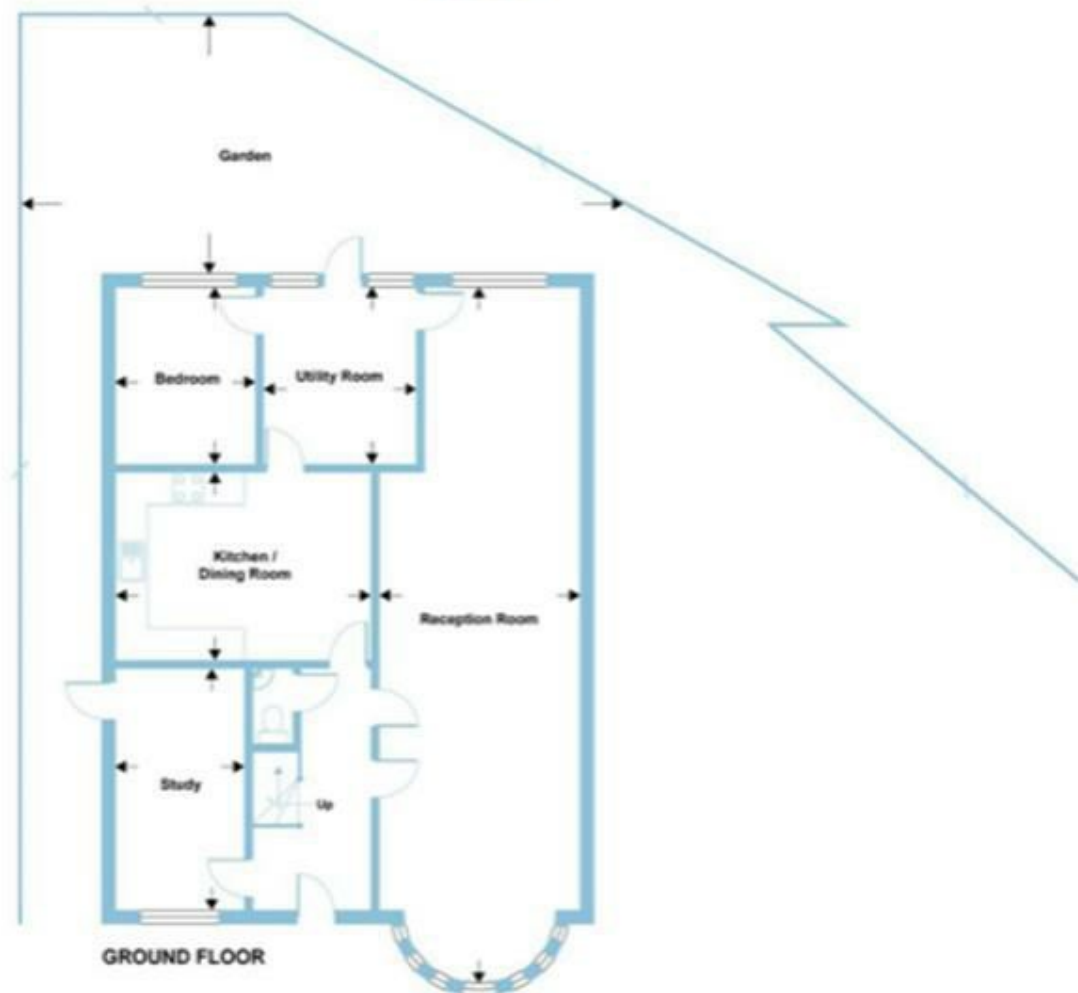
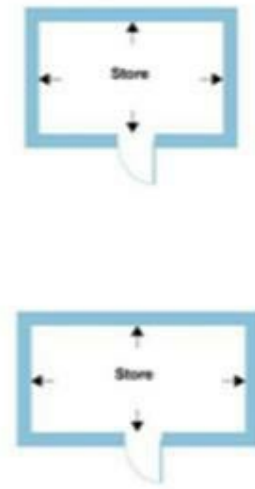
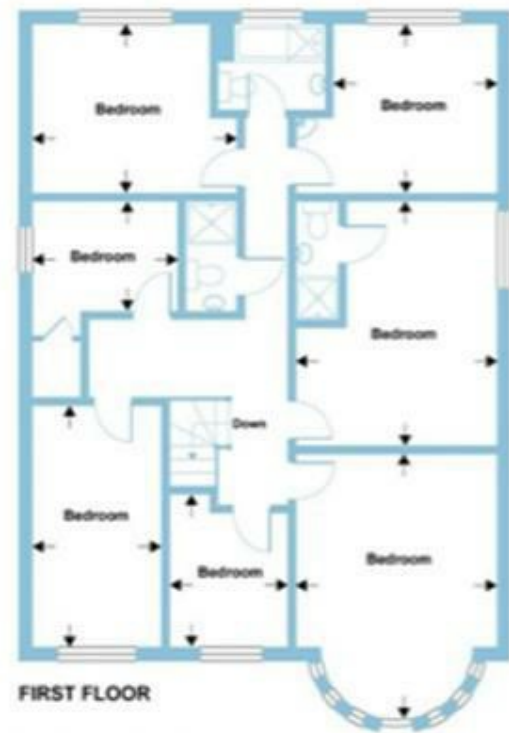


Ridge Close, Hendon, London, NW4

Approximate Area = 2296 sq ft / 213.2 sq m
Outbuildings = 168 sq ft / 15.6 sq m
Total = 2464 sq ft / 228.9 sq m
For identification only - Not to scale



GRAVITY
estates

Gravity Estates
18 Golders Green Road, NW11 8LL
02083570810
sales@gravity-estates.com
www.gravity-estates.com



Ridge Close, London, NW4 1ER

A double fronted detached 7/8 bedroom house situated in the quiet residential road in Hendon extending to over 2460 Sq Ft.

The ground floor comprises a large reception/dining room with large bay window letting in lots of natural light, a separate study/reception (formally the garage) and a fitted kitchen/diner as well as a downstairs W/C. At the rear there is a bedroom and a utility area and doors leading to the large rear garden to the rear which has an outbuilding at the back of the garden as well as a further storage space.

On the first floor there are 7 bedrooms, a mixture of double and single bedrooms as well as 3 bathrooms (1 ensuite) Further benefitting a driveway for at least 3 cars.

The property is situated close to shops, restaurants and other local amenities. Sunny Hill Park, Dollis Brook Green Walk, Windsor Open Space and Hendon Golf Club are all within walking distance. Within close proximity to the A1 to get into and out of London easily, there are also bus links and aHendon Central and Mill Hill East Tube Stations.

