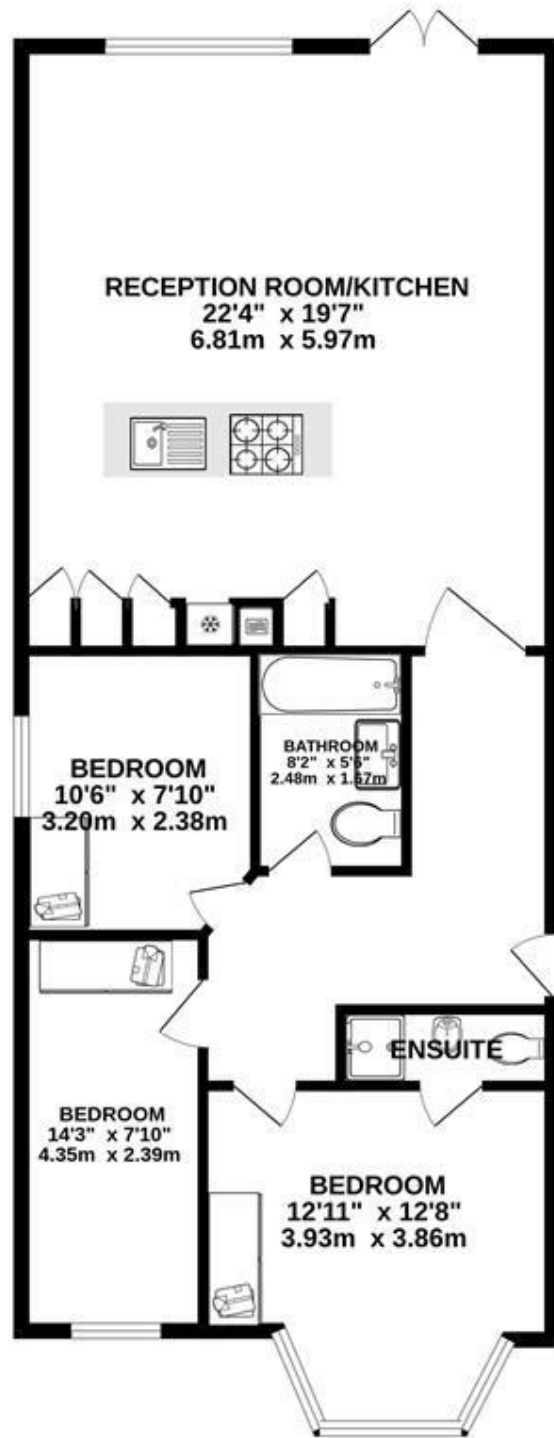


GROUND FLOOR
926 sq.ft. (86.0 sq.m.) approx.



RAVENSROFT AVENUE NW11

TOTAL FLOOR AREA: 926sq.ft. (86.0 sq.m.) approx.

Whilst every attempt has been made to ensure the accuracy of the floorplan contained here, measurements of doors, windows, rooms and any other items are approximate and no responsibility is taken for any error, omission or mis-statement. This plan is for illustrative purposes only and should be used as such by any prospective purchaser. The services, systems and appliances shown have not been tested and no guarantee as to their operability or efficiency can be given.
Made with Metropix ©2024

Gravity Estates
18 Golders Green Road, London, NW11 8LL
02083570810 sales@gravity-estates.com

GRAVITY
estates

Gravity Estates
18 Golders Green Road, NW11 8LL
02083570810
sales@gravity-estates.com
www.gravity-estates.com



Ravenscroft Avenue, London, NW11 8AU

Situated on this well positioned road, Ravenscroft Avenue, is this beautiful 3 bedroom ground floor modern apartment with stunning open plan lounge, leading onto a bespoke kitchen with plenty of storage and large island, fitted with high-end integrated appliances, and breakfast bar, 2 bathrooms (1 ensuite shower room).

Further benefitting high ceilings, a beautiful rear garden with patio area, large external secure storage cupboard and parking space to the front.

Located just a short walk from the amenities of Golders Green Road, fantastic transport links (including National Express coaches that go directly to major airports), Golders Green Tube station (Northern Line), as well as being within close proximity to the Hampstead Heath Extension.

Leasehold

£800,000

