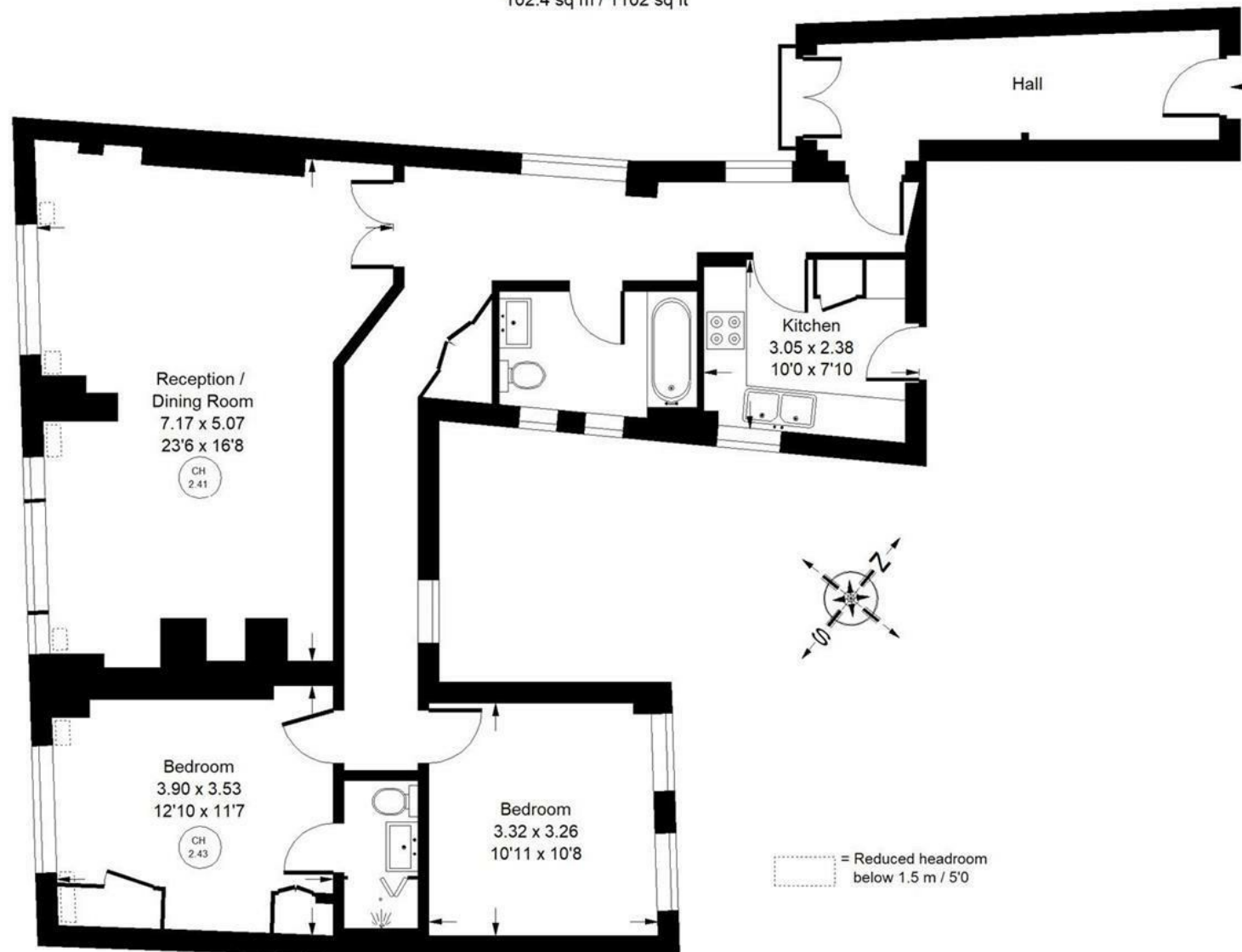


Ovington Court, SW3

Approx. Gross Internal Area
102.4 sq m / 1102 sq ft



Seventh Floor

Whilst every attempt has been made to ensure the accuracy of the floor plan, measurements are approximate and not to scale.
No guarantee is given on the total square footage of the property quoted on the plan. Figures given are for guidance.
Plan is for illustration purposes only, not to be used for valuations.



Brompton Road, London, SW3 1LB

This 2 bed 2 bath apartment is located on the 7th floor of this well maintained, portered, Victorian Mansion block, in the heart of Knightsbridge, offering far reaching panoramic South-Westerly views over the city.

Ovington Court is situated on the corner of Brompton Road and Ovington Gardens only moments from the world famous Harrods & Harvey Nichols, with a wonderful selection of shops and restaurants found both locally in Knightsbridge and towards South Kensington.

The green open spaces of Hyde Park and the museums of South Kensington can be found less than half a mile away and Knightsbridge underground station (Piccadilly Line) is 0.4 miles away.

