



Sequoia Park, Pinner
Middlesex HA5 4BS
£2,350 Per month

This well proportioned three bedroom detached family house located in peaceful Sequoia Park just minutes away from Hatch End Town Centre and Overground Station. The property is in catchment area of a popular Grimsdyke First and Middle School.

Outside:

Front garden and driveway for 1 car. Unrestricted parking on a street.
Rear large mature garden.

Ground Floor:

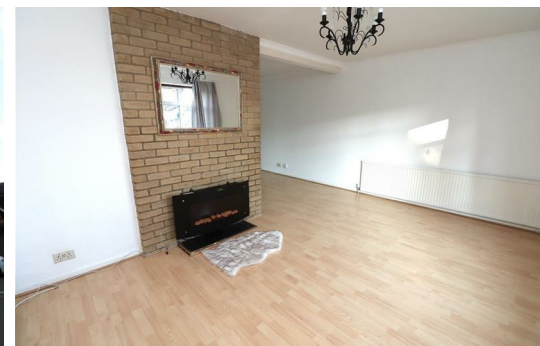
There is a hallway, WC, good size kitchen and very generous size sitting room.

First Floor:

Three double bedrooms with fitted wardrobes and extra large bathroom.

Offered on part furnished basis, but landlord is flexible.

Available 16th June.



Sequoia Park, Pinner
Middlesex HA5 4BS



Energy Efficiency Rating		Current	Potential
Very energy efficient - lower running costs			
(92 plus) A			84
(81-91) B			
(69-80) C			
(55-68) D		54	
(39-54) E			
(21-38) F			
(1-20) G			
Not energy efficient - higher running costs			
England & Wales		EU Directive 2002/91/EC	

Environmental Impact (CO ₂) Rating		Current	Potential
Very environmentally friendly - lower CO ₂ emissions			
(92 plus) A			84
(81-91) B			
(69-80) C			
(55-68) D		48	
(39-54) E			
(21-38) F			
(1-20) G			
Not environmentally friendly - higher CO ₂ emissions			
England & Wales		EU Directive 2002/91/EC	