



Melrose Avenue, NW2

£585,000

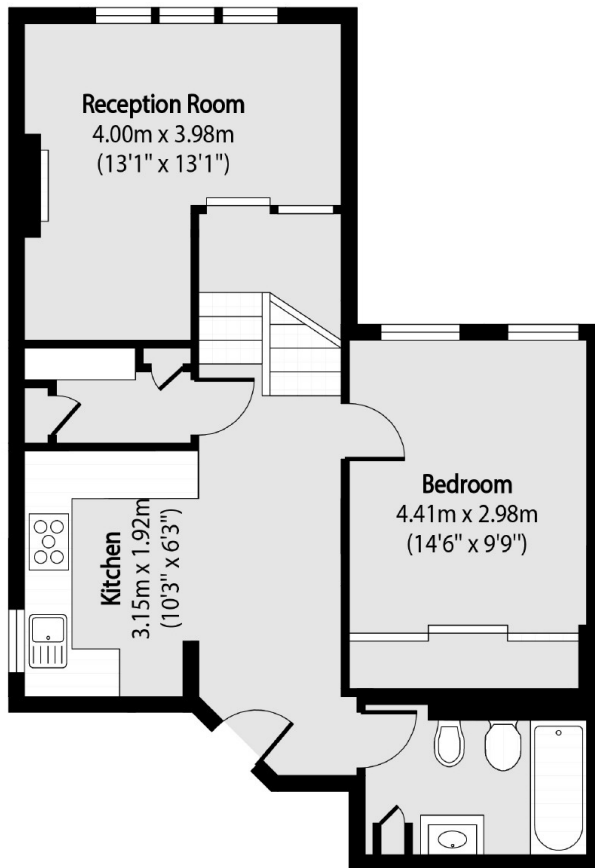
This generously sized two/three bedroom flat offers living space across the top two floors of a period conversion and has a separate reception room, an eat-in kitchen, and a family bathroom. There is scope to further extend the property (STPP) and it comes with a share of the freehold and no onward chain.

Melrose Avenue is a tree-lined road just 0.4 miles from Willesden Green (Jubilee line Zone 2) station. The ever popular Gladstone Park is also close by offering outdoor activities including tennis courts, an outdoor gym and a weekly Park Run.

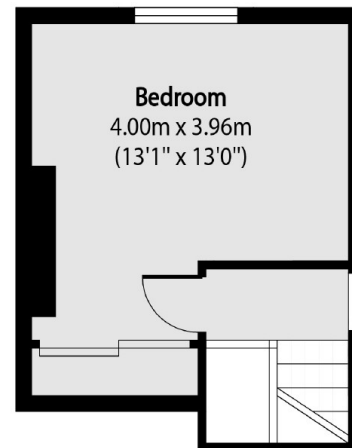
Features

- Two/Three Double Bedrooms
- Split Level
- Eat-In Kitchen
- Separate Reception Room
- Share Of Freehold
- No Onward Chain

Melrose Avenue, London, NW2



First Floor



Second Floor

Total area (approx): 73.52 sq m (791 sq. ft)