



Larch Road, NW2

£692 Per week

This modern three bedroom ground floor garden flat is ideally situated in the heart of Cricklewood with many local amenities near by. The property has a spacious open plan living area with a integrated kitchen, private rear garden, a tiled family bathroom and good storage space.

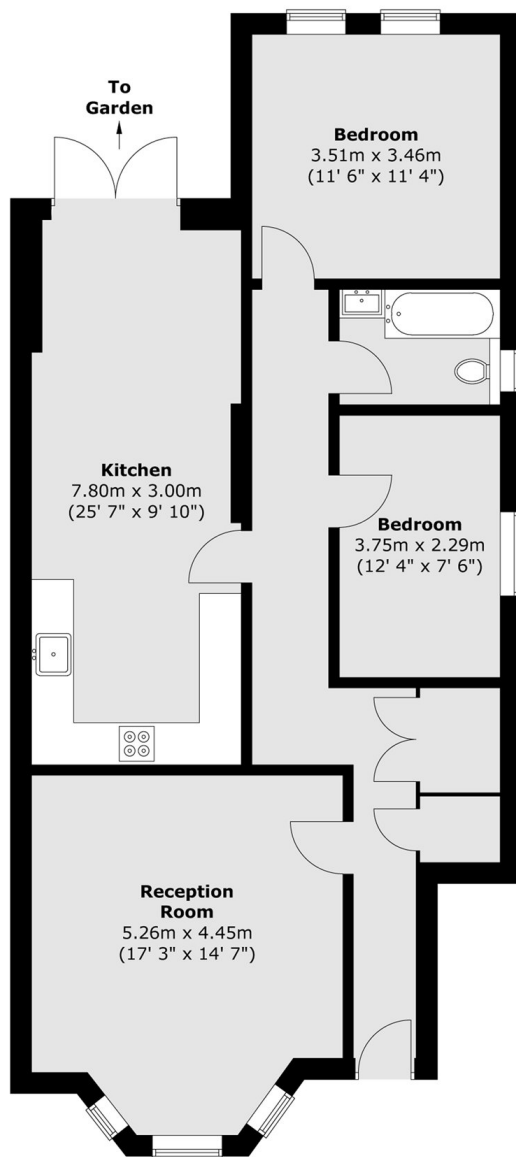
Larch Road is a residential street located close to excellent transport links including Cricklewood Station (Thameslink) and a number of bus routes. A variety of shops, eateries and facilities are also on your doorstep with easy access to Brent Cross Shopping Centre.

Features

- Three Bedrooms
- Open Plan
- Integrated Kitchen
- Family Bathroom
- Private Garden
- Ideally Situated

Larch Road, LONDON, NW2

Ground Floor



Total area (approx.) : 88.7 sq. m (955 sq. ft)