



Kilburn, NW2

£450 Per week

A well presented three bedroom, two bathroom apartment in this popular development with 24 hour concierge. There is access to gym, swimming pool and roof terrace.

Located on the borders of the popular Mapesbury Conservation area with Kilburn High Road and tube on your doorstep. The North London Tavern is a great place to go for a well earned drink.

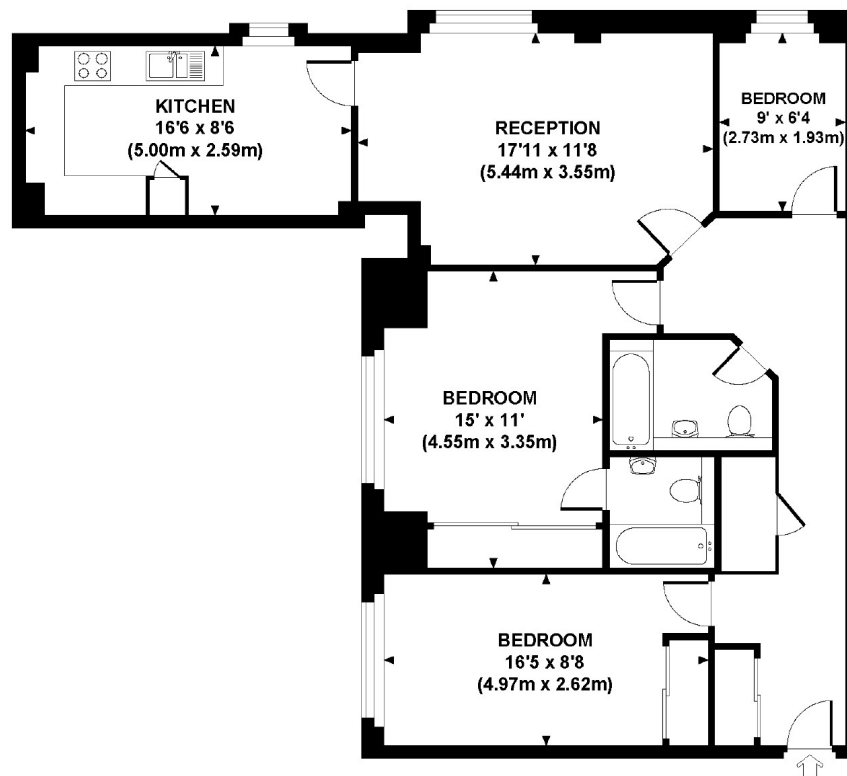
Features

- Three Bedrooms
- Two Bathrooms
- Private Residents Gym
- Great Location
- Second Floor
- Purpose Built Development

Shoot Up Hill, London, NW2

JUBILEE HEIGHTS, SHOOT UP HILL, NW2

Approx. gross internal area
968 Sq Ft / 89.9 Sq M.
Representation of current layout.
Not to scale.



Contact

To arrange a viewing call our office on the number below or visit our website.



Energy Rating: D. We aim to make our particulars both accurate and reliable. However they are not guaranteed; nor do they form part of an offer or contract. If you require clarification on any points then please contact us, especially if you're traveling some distance to view. Please note that appliances and heating systems have not been tested and therefore no warranties can be given as to their good working order.