



Howard Road, NW2

£425,000

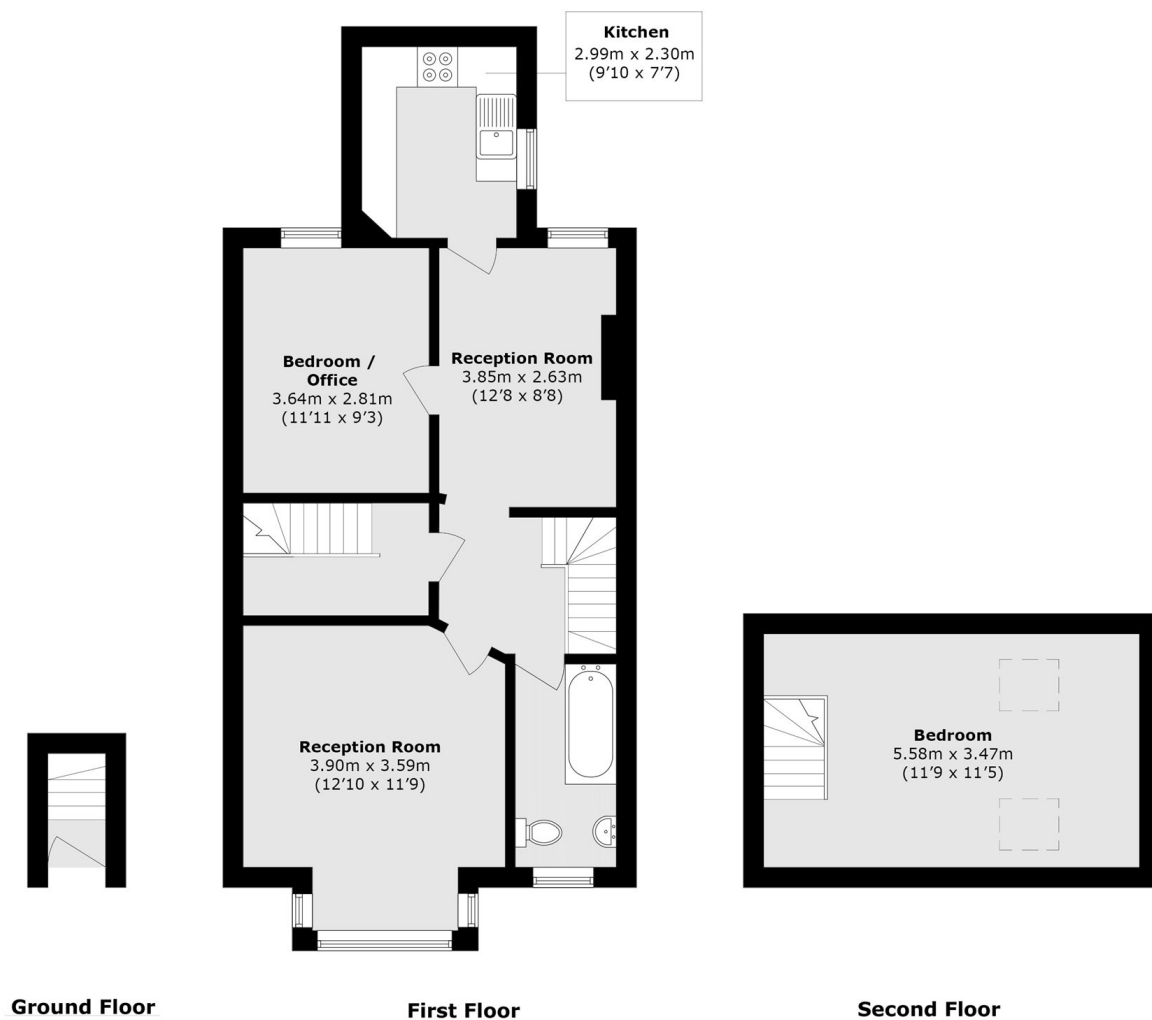
This two double bedroom maisonette measures in excess of 850 sqft, This bright and spacious property offers two reception areas, separate modern fitted kitchen, and bathroom. The property comes with a long lease and no onward chain.

Howard Road is ideally located just moments from the variety of local amenities of Willesden Green and Cricklewood including shops, cafes and restaurants and numerous transport links including Cricklewood Station (Thameslink) and Willesden Green Station.

Features

- Maisonette
- Two Bedrooms
- Two Reception Areas
- Separate Fitted Kitchen
- Long Lease
- Chain Free

Howard Road, London, NW2



Total area (approx.): 80.5 sq. m (851.4 sq. ft)

Dexters

Cricklewood
28-30 Cricklewood Broadway
London
NW2 3HD
Sales
020 7794 7710

Energy Rating: . We aim to make our particulars both accurate and reliable. However they are not guaranteed; nor do they form part of an offer or contract. If you require clarification on any points then please contact us, especially if you're traveling some distance to view. Please note that appliances and heating systems have not been tested and therefore no warranties can be given as to their good working order.

 **RICS** | Regulated
Estate Agent
and Letting Agent

dexters.co.uk