



## Brook Road, NW2

### £270,000

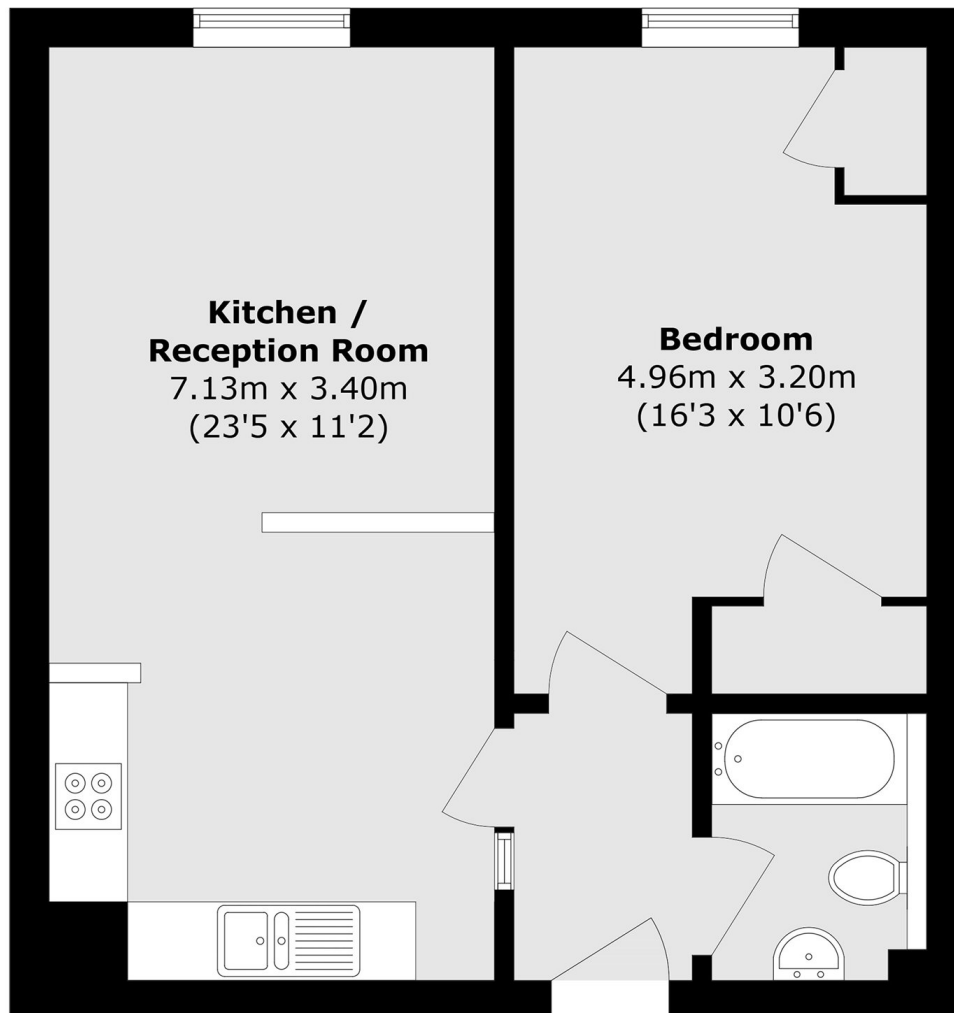
A well-presented one-bedroom flat set within a listed building in a secure gated development. The property features an open-plan living and reception area, secure allocated parking, and is offered to the market chain free.

Located on Brook Road, moments away from the 80-acre Gladstone Park and close to Dollis Hill Underground Station (Jubilee Line) & Brent Cross West Station (Thameslink)

### Features

- Gated Development
- Listed Building
- One Bedroom
- Communal Gardens
- Secure Parking
- Chain Free

Brook Road,  
London, NW2



Total area (approx.): 47.8 sq. m (514.5 sq. ft)

**Dexters**

Cricklewood  
28-30 Cricklewood Broadway  
London  
NW2 3HD  
Sales  
020 7794 7710

Energy Rating: B. We aim to make our particulars both accurate and reliable. However they are not guaranteed; nor do they form part of an offer or contract. If you require clarification on any points then please contact us, especially if you're traveling some distance to view. Please note that appliances and heating systems have not been tested and therefore no warranties can be given as to their good working order.

 **RICS** | Regulated  
Estate Agent  
and Letting Agent

[dexters.co.uk](https://www.dexters.co.uk)