



Shoot Up Hill, NW2

£400,000

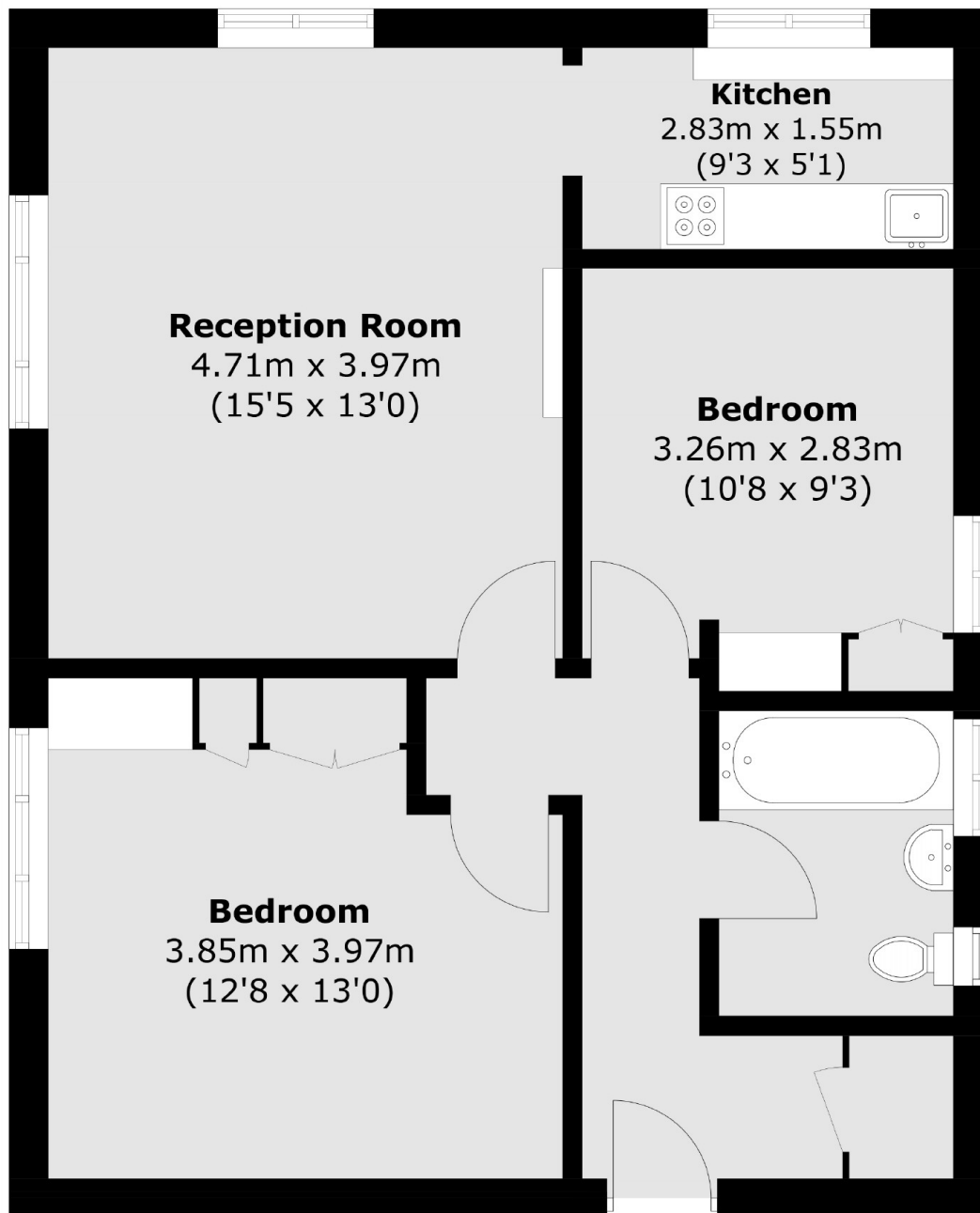
Situated in this sought after purpose built block this two double bedroom flat has a separate kitchen, spacious reception room, ample storage, bathroom and separate WC. The flat is located on the second floor with lift access and comes with access to communal gardens, off-street parking, a garage and no onward chain.

Wiltren Court is close to the trendy shops and bars of West End Lane and is within easy reach of Kilburn station (Jubilee Line) and Brondesbury station (Overground) offering excellent access to the City.

Features

- Two Double Bedrooms
- No Onward Chain
- Second Floor With Lift Access
- Separate Kitchen
- Newly Extended Lease
- Off Street Parking And Garage

Shoot Up Hill, London, NW2



Total area (approx.): 60.6 sq. m (652.3 sq. ft)

Dexters

Cricklewood
28-30 Cricklewood Broadway
London
NW2 3HD
Sales
020 7794 7710

Energy Rating: C. We aim to make our particulars both accurate and reliable. However they are not guaranteed; nor do they form part of an offer or contract. If you require clarification on any points then please contact us, especially if you're traveling some distance to view. Please note that appliances and heating systems have not been tested and therefore no warranties can be given as to their good working order.

 **RICS** | Regulated
Estate Agent
and Letting Agent

[dexters.co.uk](https://www.dexters.co.uk)