



## Shoot Up Hill, NW2

### £475,000

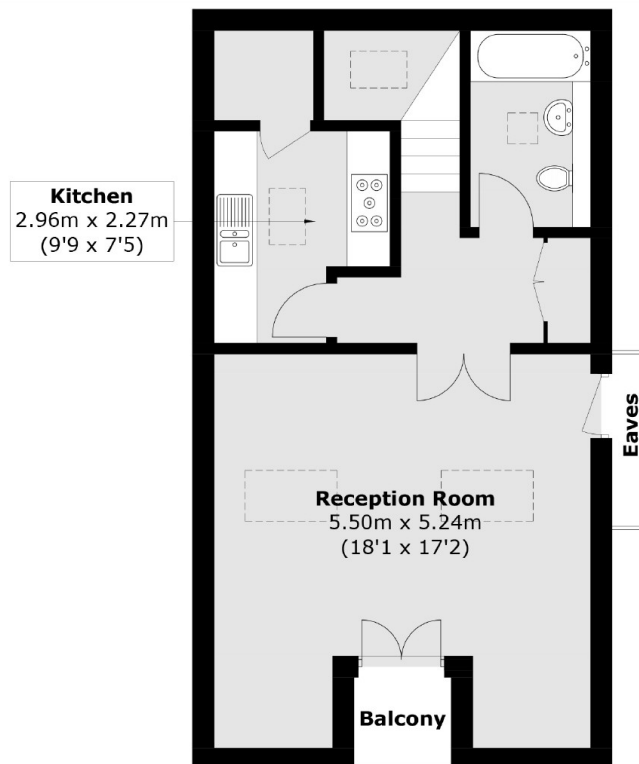
This two double bedroom, two bathroom split-level flat is located within a desirable period conversion on a favourable residential road. The flat benefits from a good-size reception and separate kitchen and comes with off-street parking and no onwads chain.

Ideally located close to great schools such as Mulberry House School, and minutes from Jubilee line, London Overground, and Thameslink. An array of amenities in fashionable West Hampstead, Kilburn, and Cricklewood Broadway are within easy reach.

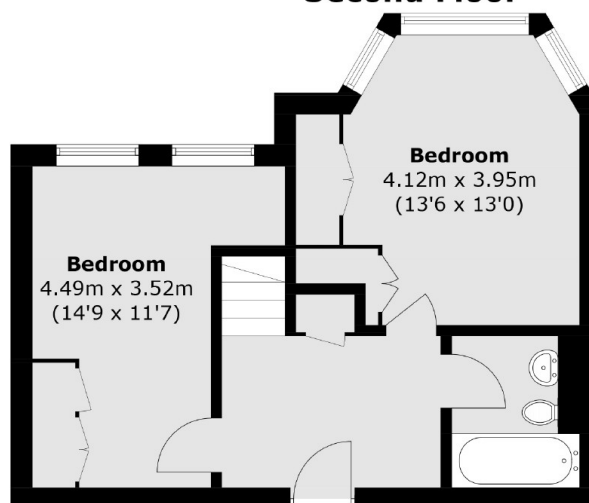
### Features

- Split-Level
- Two Double Bedrooms
- Separate Kitchen
- New Lease
- No Onward Chain
- Off-Street Parking

# Shoot Up Hill, London, NW2



## Second Floor



## First Floor

Total area (approx.): 90.2 sq. m (970.8 sq. ft)  
Balcony: 1.7 sq. m (18.3 sq. ft)  
(Excluding Eaves)

# Dexters

Cricklewood  
28-30 Cricklewood Broadway  
London  
NW2 3HD  
Sales  
020 7794 7710

Energy Rating: D. We aim to make our particulars both accurate and reliable. However they are not guaranteed; nor do they form part of an offer or contract. If you require clarification on any points then please contact us, especially if you're traveling some distance to view. Please note that appliances and heating systems have not been tested and therefore no warranties can be given as to their good working order.

 **RICS** | Regulated  
Estate Agent  
and Letting Agent

[dexters.co.uk](https://www.dexters.co.uk)