



Cotswold Gardens, NW2

£835,000

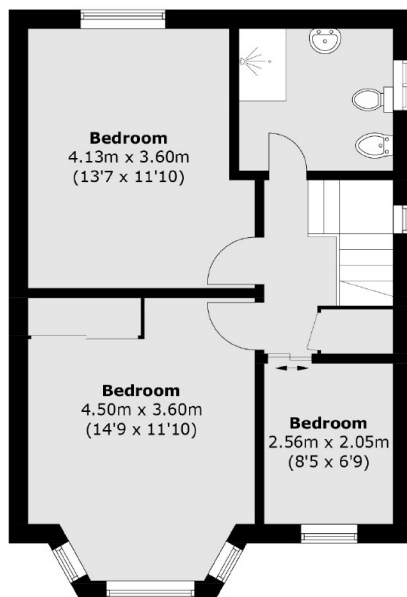
A three bedroom semi-detached family home measuring in excess of 1200 Sqft. With two reception rooms, a large open-plan kitchen/breakfast room and additional WC. The property comes off-street parking and potential to extend (STPP).

Cotswold Gardens is situated within the Golders Green Estate, a very family-oriented residential area. Local transport links include Cricklewood station, the new Brent Cross West station, and numerous bus routes.

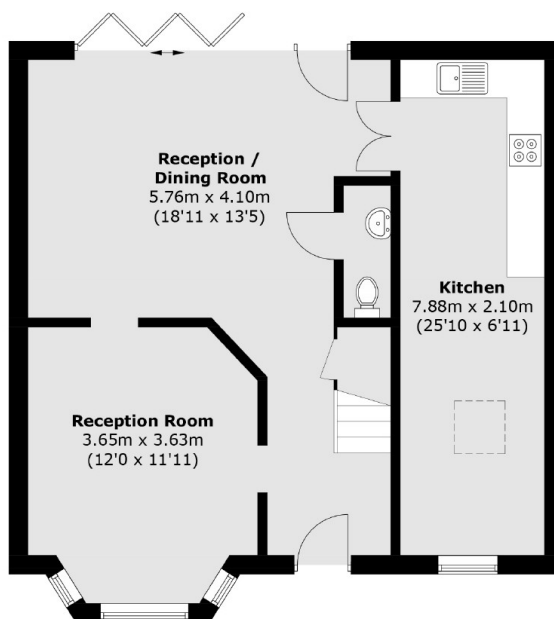
Features

Semi-Detached
Three Bedrooms
Two Reception Rooms
Kitchen/Breakfast Room
Off-Street Parking
Potential To Extend (STPP)

Cotswold Gardens, London, NW2



First Floor



Ground Floor

Total area (approx.): 114.9 sq. m (1,236.8 sq. ft)