



Mapesbury Road, NW2

£923 Per week

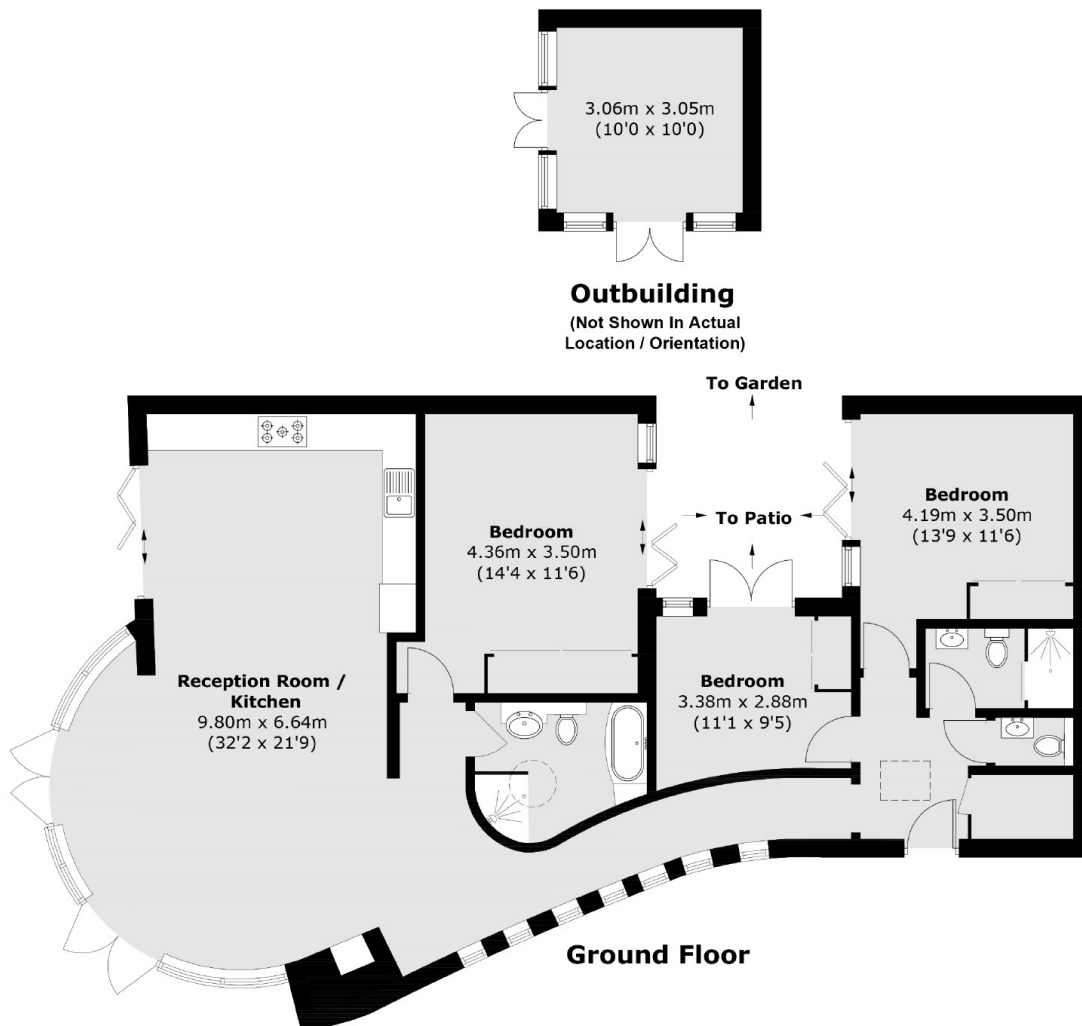
This impressive, detached bungalow is situated within the sought after Mapesbury Conservation Area and is comprised of a spacious, open plan kitchen/reception room, three double bedrooms, two bathrooms, an additional WC. A studio/outbuilding, a storage cupboard in the hallway and a lovely private garden.

Mapesbury Road is a leafy, residential street close to the many amenities of Queens Park (Salisbury Road), Willesden Green (Walm Lane) and West Hampstead (West End Lane. Transport links are superb from Kilburn (Jubilee Line), Brondesbury (Overground), Brondesbury Park (Overground) and Queens Park (Bakerloo Line).

Features

- Three Bedrooms
- Open Plan Reception
- Integrated Kitchen
- Two Bathrooms
- Outbuilding
- Private Garden

Mapesbury Road, London, NW2



Total area (approx.): 116.5 sq. m (1,254.0 sq. ft)
Outbuilding: 9.7 sq. m (104.4 sq. ft)