



Woodley Crescent, NW2

£530 Per week

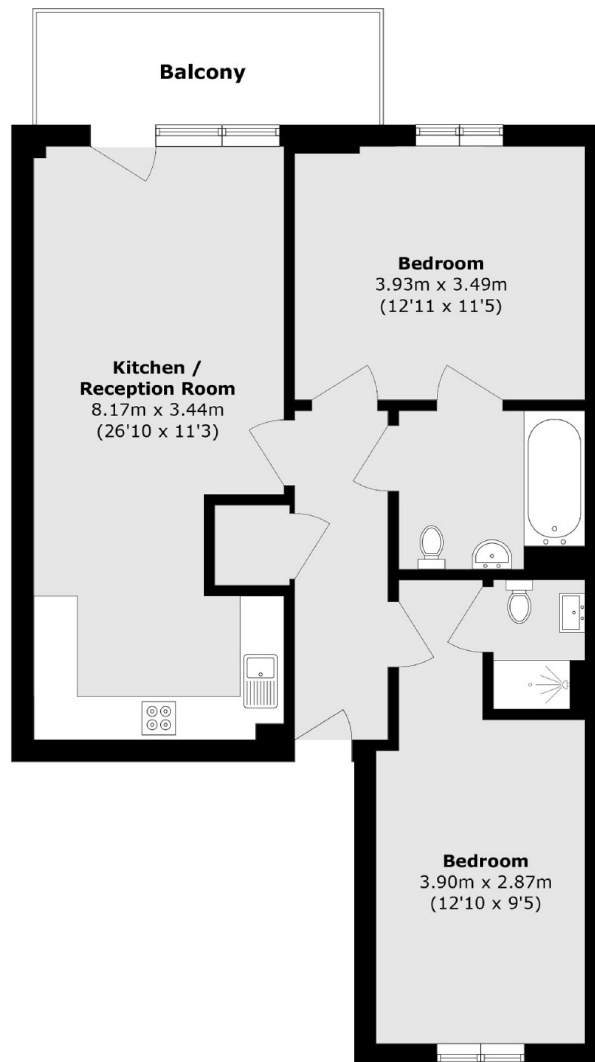
This modern two bedroom second floor apartment is ideally situated with underground parking. The flat has an open plan living area with a integrated kitchen, excellent storage space, a private balcony, two tiled bathrooms, and access to the well maintained communal garden.

Cricklewood Lane is ideally located moments away from Cricklewood mainline & Thameslink station with many bus links and road access to the M1 and the city. West Hampstead and Hampstead are also nearby.

Features

- Two Bedrooms
- Two Bathrooms
- Open-plan Reception
- Private Balcony
- Off Street Parking
- Ideally Located

Woodley Crescent, London, NW2



Total area (approx.): 73.9 sq. m (795.5 sq. ft)

Balcony area (approx.): 7.1 sq. m (76.4 sq. ft)

Dexters

Cricklewood
28-30 Cricklewood Broadway
London
NW2 3HD
Lettings
020 7794 1730

Energy Rating: B. We aim to make our particulars both accurate and reliable. However they are not guaranteed; nor do they form part of an offer or contract. If you require clarification on any points then please contact us, especially if you're traveling some distance to view. Please note that appliances and heating systems have not been tested and therefore no warranties can be given as to their good working order.

 **RICS** | Regulated
Estate Agent
and Letting Agent

[dexters.co.uk](https://www.dexters.co.uk)