



Ashford Road, NW2

£800,000

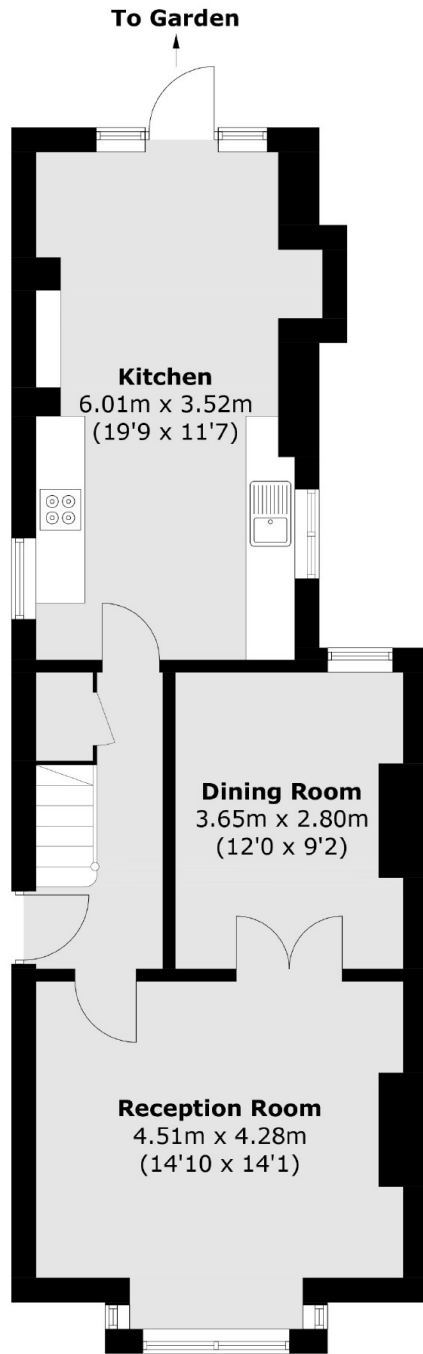
A three double bedroom semi-detached family home arranged over two floors, with two reception rooms, an eat-in kitchen leading to a mature garden, a bathroom and a WC. The property is in need of modernisation throughout and comes with no onward chain.

Ashford Road is a residential street conveniently located within easy reach of Cricklewood Thameslink station, with underground links from nearby Willesden Green providing connections into Central London and the city.

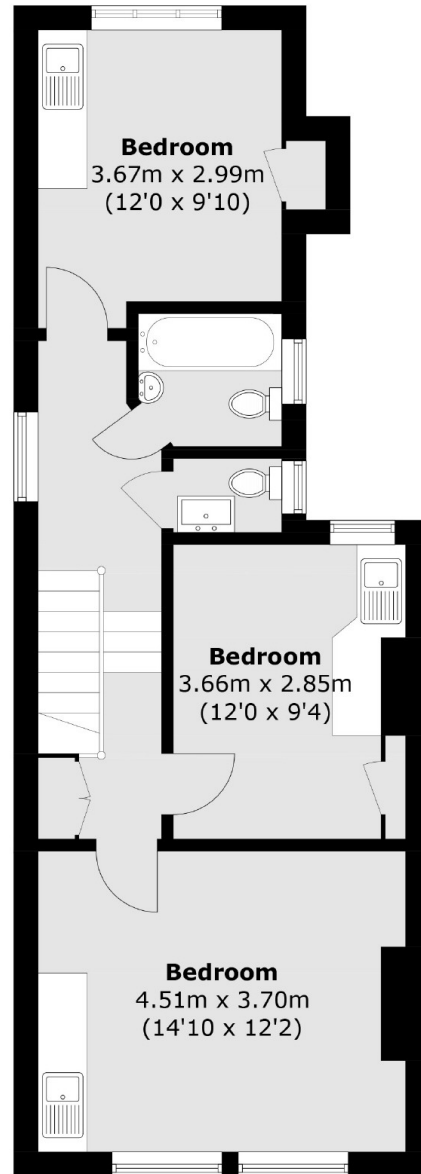
Features

- Three Bedrooms
- Semi Detached
- Bathroom And WC
- Two Reception Rooms
- Eat-In Kitchen
- No Onward Chain

Ashford Road, London, NW2



Ground Floor



First Floor

Total area (approx.): 108.4 sq. m (1166.8 sq. ft)