

Ivy Road, NW2

£876 Per week

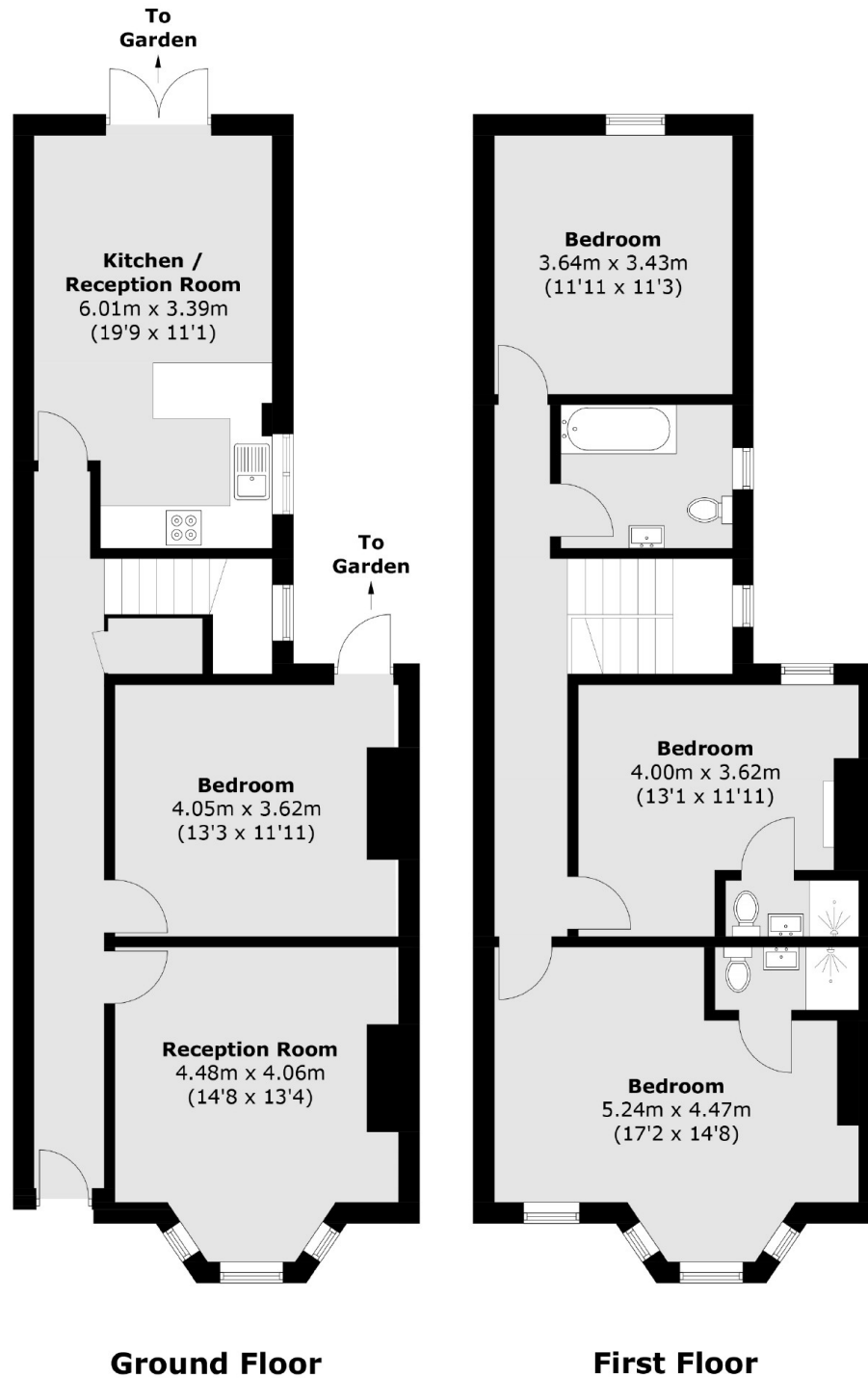
This newly refurbished four bedroom family home is spread over two floors. The property has a spacious reception room, an eat-in family kitchen, a tiled family bathroom, two ensuite shower rooms, good storage space, period features, and a private garden.

Ivy Road is ideally situated close to many local amenities, deli's, shops, schools and cafés. Gladstone Park is nearby as well as Willesden Green station and Cricklewood Thameslink

Features

- Four Bedrooms
- Three Bathrooms
- Separate Reception
- Eat-in Family Kitchen
- Private Garden
- Ideally Situated

Ivy Road, London, NW2



Total area (approx.): 133.4 sq. m (1,435.8 sq. ft)

Dexters

Cricklewood
28-30 Cricklewood Broadway
London
NW2 3HD
Lettings
020 7794 1730

Energy Rating: E. We aim to make our particulars both accurate and reliable. However they are not guaranteed; nor do they form part of an offer or contract. If you require clarification on any points then please contact us, especially if you're traveling some distance to view. Please note that appliances and heating systems have not been tested and therefore no warranties can be given as to their good working order.

 **RICS** | Regulated
Estate Agent
and Letting Agent

[dexters.co.uk](https://www.dexters.co.uk)