



Galsworthy Road, NW2

£575,000

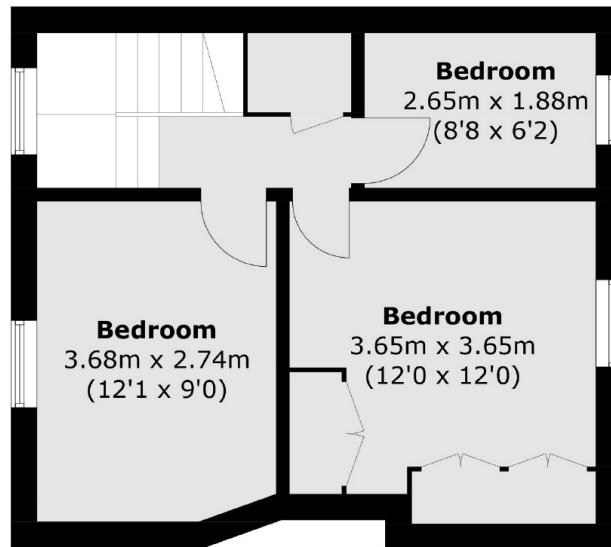
This three bedroom end of terrace freehold house offers great potential to renovate and extend (STPP) and currently benefits from a spacious reception, a separate kitchen and utility room leading out onto a large private garden, and a family bathroom.

Galsworthy Road is situated in a quiet location close to the shops and amenities of Cricklewood Broadway and Kilburn. West Hampstead and Childs Hill are both a short distance away too.

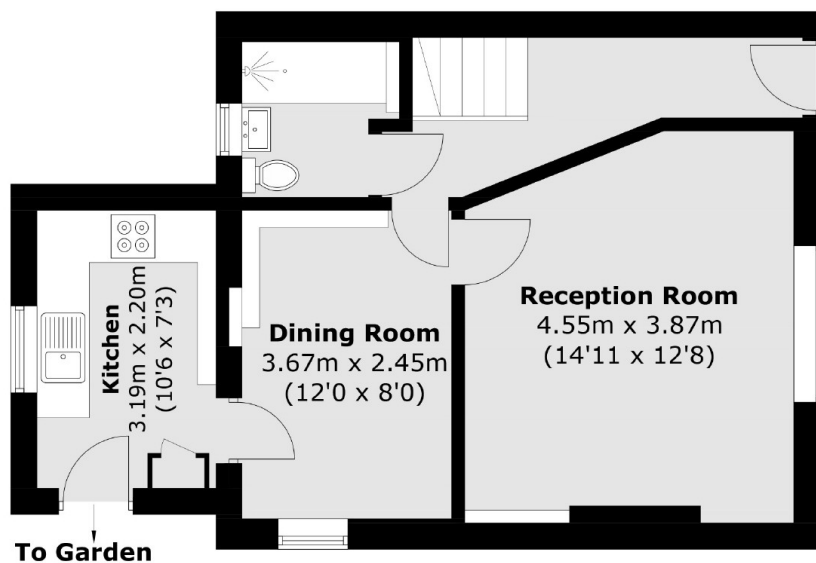
Features

- Three Bedrooms
- Large Private Garden
- Separate Reception Room
- Freehold
- Off Street Parking
- No Onward Chain

Galsworthy Road,
London, NW2



First Floor



Ground Floor

Total area (approx.): 78.1 sq. m (840.7 sq. ft)