



Fordwych Road, NW2

£576 Per week

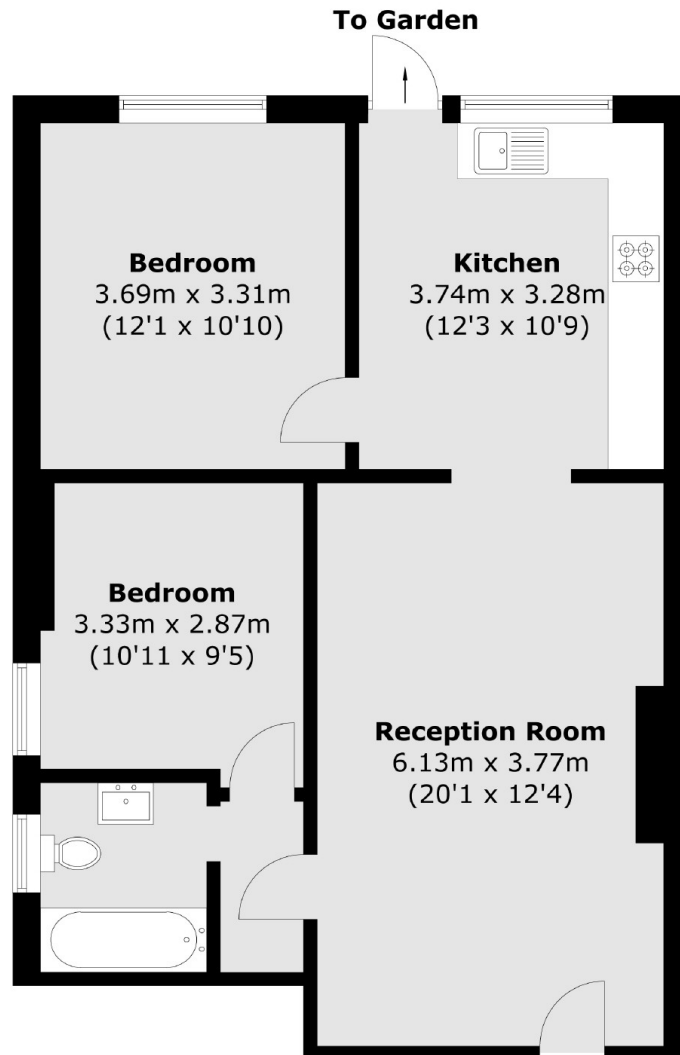
This spacious two bedroom garden flat is ideally situated in Cricklewood with easy access to West Hampstead and Kilburn. The property has an open plan living area with an integrated kitchen and doors leading to a large private garden.

Fordwych Road is well located in Cricklewood with many local amenities, shops, and restaurants. There are excellent transport links, as West Hampstead, Kilburn, and Cricklewood Thameslink Stations are nearby.

Features

- Two Bedrooms
- Tiled Bathroom
- Spacious Living Area
- Integrated Kitchen
- Private Gardens
- Ideally Situated

Fordwych Road,
London, NW2



Ground Floor

Total area (approx.): 64.8 sq. m (697.5 sq. ft)

Dexters

Cricklewood
28-30 Cricklewood Broadway
London
NW2 3HD
Lettings
020 7794 1730

Energy Rating: C. We aim to make our particulars both accurate and reliable. However they are not guaranteed; nor do they form part of an offer or contract. If you require clarification on any points then please contact us, especially if you're traveling some distance to view. Please note that appliances and heating systems have not been tested and therefore no warranties can be given as to their good working order.

 **RICS** | Regulated
Estate Agent
and Letting Agent

dexters.co.uk