



Ashford Road, NW2

£850,000

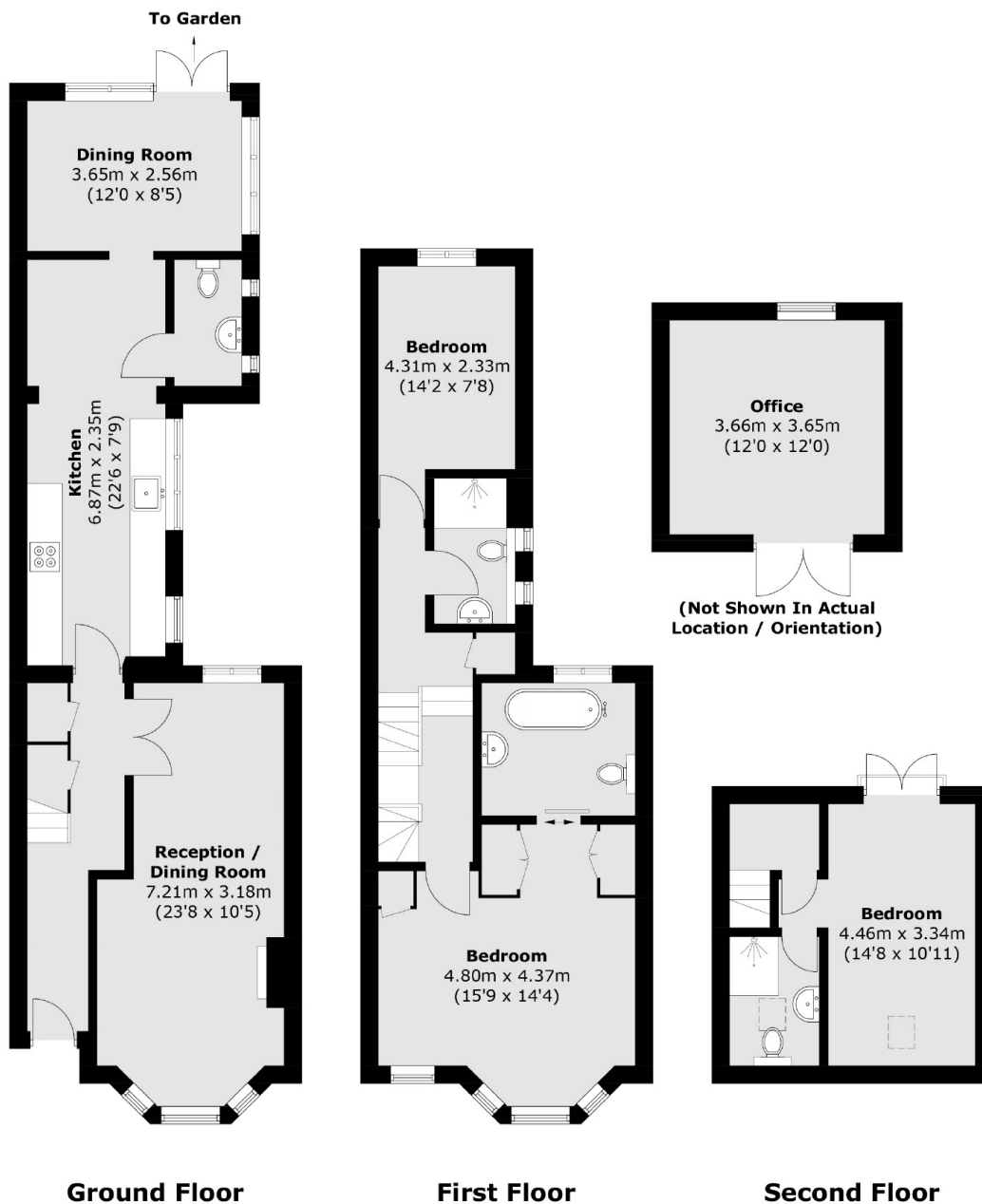
A three double bedroom period family home arranged over three floors, with a double reception room featuring wood floors and a period fireplace, a large galley kitchen, a dining room leading to a mature garden, three bathrooms, and a garden office.

Ashford Road is a residential street conveniently located within easy reach of Cricklewood Thameslink station, with underground links from nearby Willesden Green providing connections into Central London and the city.

Features

- Three Bedrooms
- End of Terrace
- Three Bathrooms
- Garden Office
- Double Reception Room
- Dining Room

Ashford Road, London, NW2



Total area (approx.): 124.1 sq. m (1,335.9 sq. ft)
Office: 13.6 sq. m (146.4 sq. ft)

Dexters

Cricklewood
28-30 Cricklewood Broadway
London
NW2 3HD
Sales
020 7794 7710

Energy Rating: D. We aim to make our particulars both accurate and reliable. However they are not guaranteed; nor do they form part of an offer or contract. If you require clarification on any points then please contact us, especially if you're traveling some distance to view. Please note that appliances and heating systems have not been tested and therefore no warranties can be given as to their good working order.

 **RICS** | Regulated
Estate Agent
and Letting Agent

[dexters.co.uk](https://www.dexters.co.uk)