



Sheldon Road, NW2  
£669 Per week

**Dexters**





## Sheldon Road, NW2

This four bedroom split-level period conversion is ideally situated with excellent transport links close by. The property is bright and spacious with a separate reception room, eat-in family kitchen, period features, high ceilings, and excellent storage space.

On the first floor there is a separate reception room with a feature fireplace, an integrated eat-in family kitchen, a single bed/study room, and a guest WC/utility room.

On the second floor are two well sized primary bedrooms, a tiled shower room, and a further single bedroom. The property has period features, high ceilings, wood flooring in parts, and excellent storage space throughout.

Sheldon Road is ideally located close to many local amenities, delis, shops, and cafés. Gladstone Park is close by as well as the Mapesbury Dell. You also have good transport with Willesden Green station, Kilburn station, and Cricklewood Thameslink nearby.

### Features

- Four Bedrooms
- Spacious Reception
- Integrated Family Kitchen
- Tiled Shower Room
- Split Level
- Wood Flooring



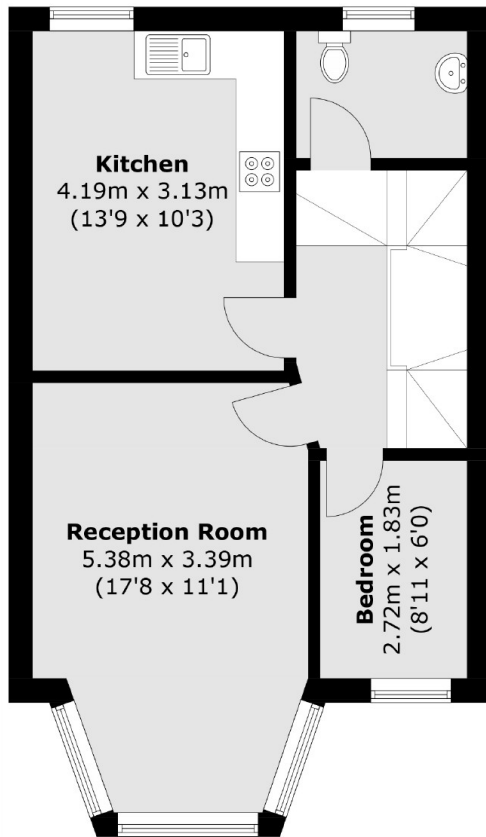




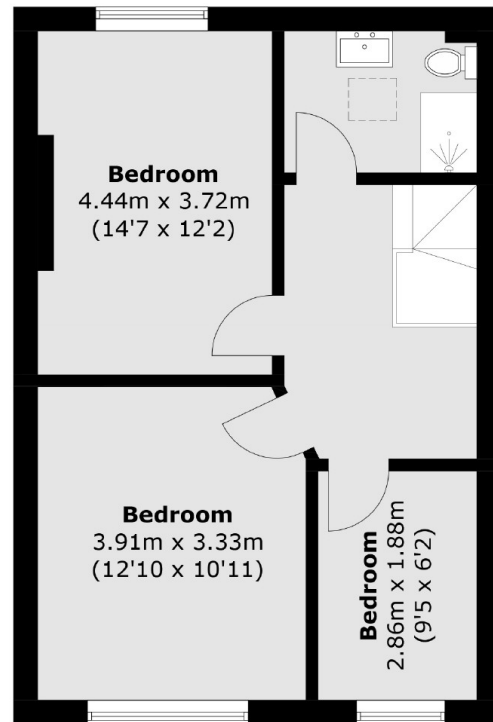




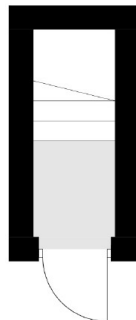
# Sheldon Road, London, NW2



**First Floor**



**Second Floor**



**Ground Floor**

Total area (approx.): 96.3 sq. m (1,035.5 sq. ft)