



Haider Close, NW2

£1,038 Per week

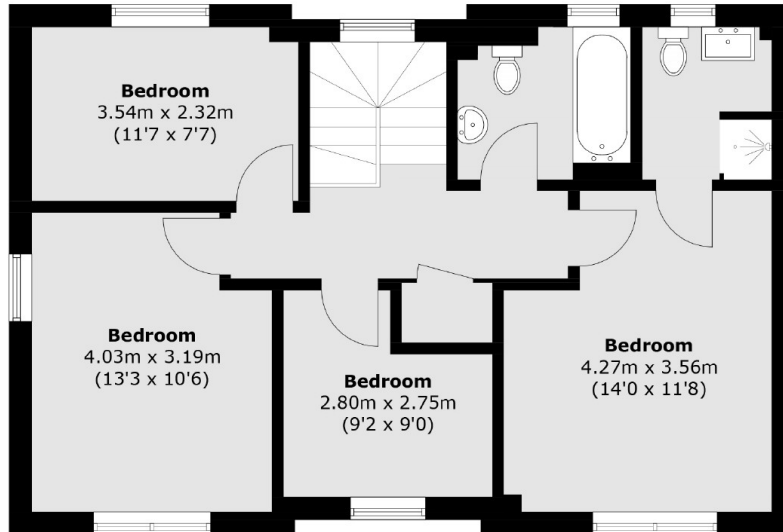
This modern detached four-bedroom townhouse offers exceptional living space across two floors. There is a spacious reception room perfect for relaxation alongside an eat-in family kitchen. The house also features a stunning rear garden and off-street parking.

Haider Close is located close to many amenities and transport links. Golders Green and Brent Cross stations are nearby in addition to Brent Cross shopping centre as well as Golders Hill Park and Hampstead Heath.

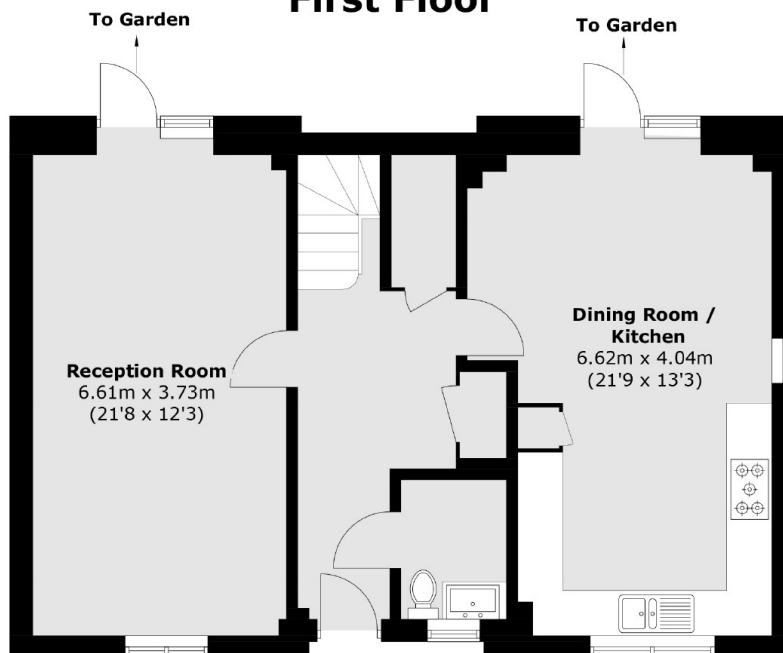
Features

- Four Bedrooms
- Spacious Reception
- Eat-in Family Kitchen
- Private Rear Garden
- Three Bathrooms
- Allocated Parking

Haider Close, London, NW2



First Floor



Ground Floor

Total area (approx.): 125.8 sq. m (1354.0 sq. ft)