



## Huddlestone Road, NW2

£426 Per week

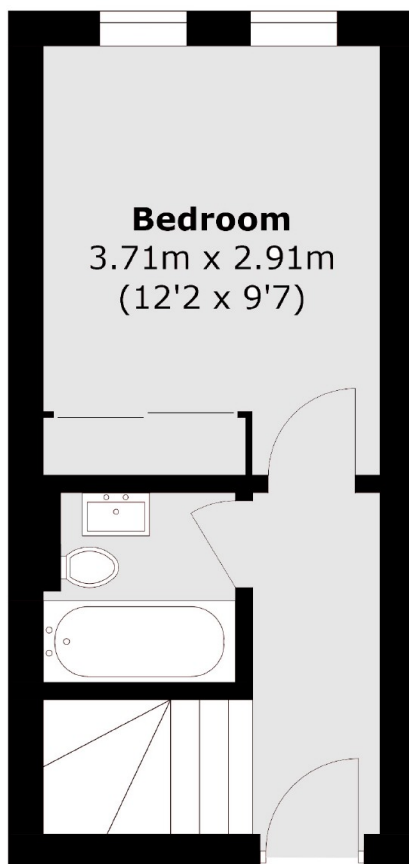
A stunning split-level one-bedroom apartment in a sought-after location. This beautifully converted church features a modern fitted kitchen, stylish bathroom, and a high-quality finish throughout, blending contemporary style with original charm.

Huddlestone Road is a quiet residential road set moments from the heart of Willesden Green, close to Gladstone Park. It is within easy reach of Willesden Green and Dollis Hill stations, both offering the Jubilee Line.

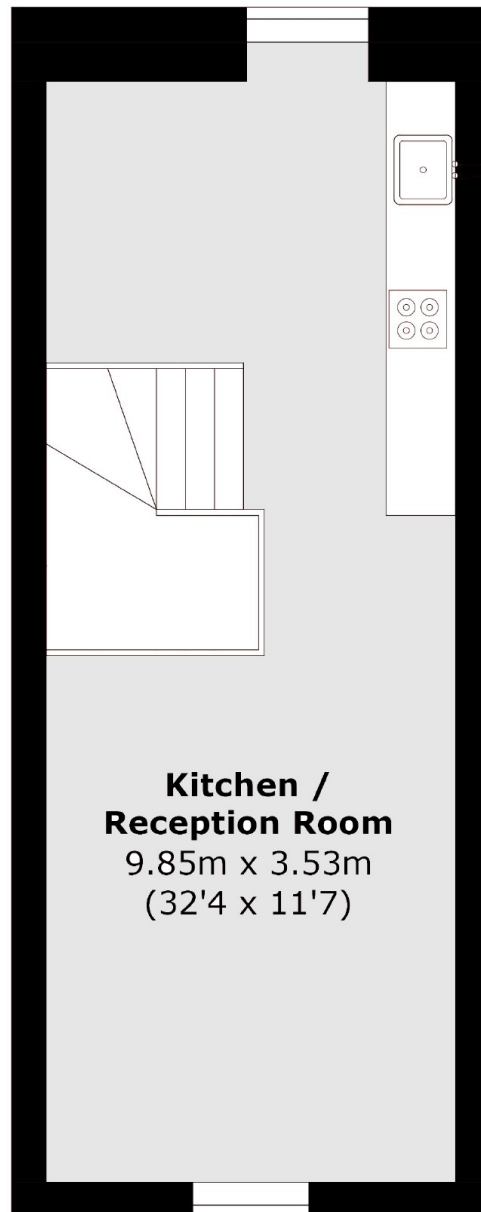
### Features

- Beautiful converted church
- Unique split level one bedroom
- One bathroom
- Fitted modern kitchen
- Great finish
- Sought after location

Huddlestone Road,  
London, NW2



**First Floor**



**Second Floor**

Total area (approx.): 54.7 sq. m (588.8 sq. ft)

**Dexters**

Cricklewood  
28-30 Cricklewood Broadway  
London  
NW2 3HD  
Lettings  
020 7794 1730

Energy Rating: C. We aim to make our particulars both accurate and reliable. However they are not guaranteed; nor do they form part of an offer or contract. If you require clarification on any points then please contact us, especially if you're traveling some distance to view. Please note that appliances and heating systems have not been tested and therefore no warranties can be given as to their good working order.

 **RICS** | Regulated  
Estate Agent  
and Letting Agent

[dexters.co.uk](https://www.dexters.co.uk)