



Ashford Road, NW2

£475,000

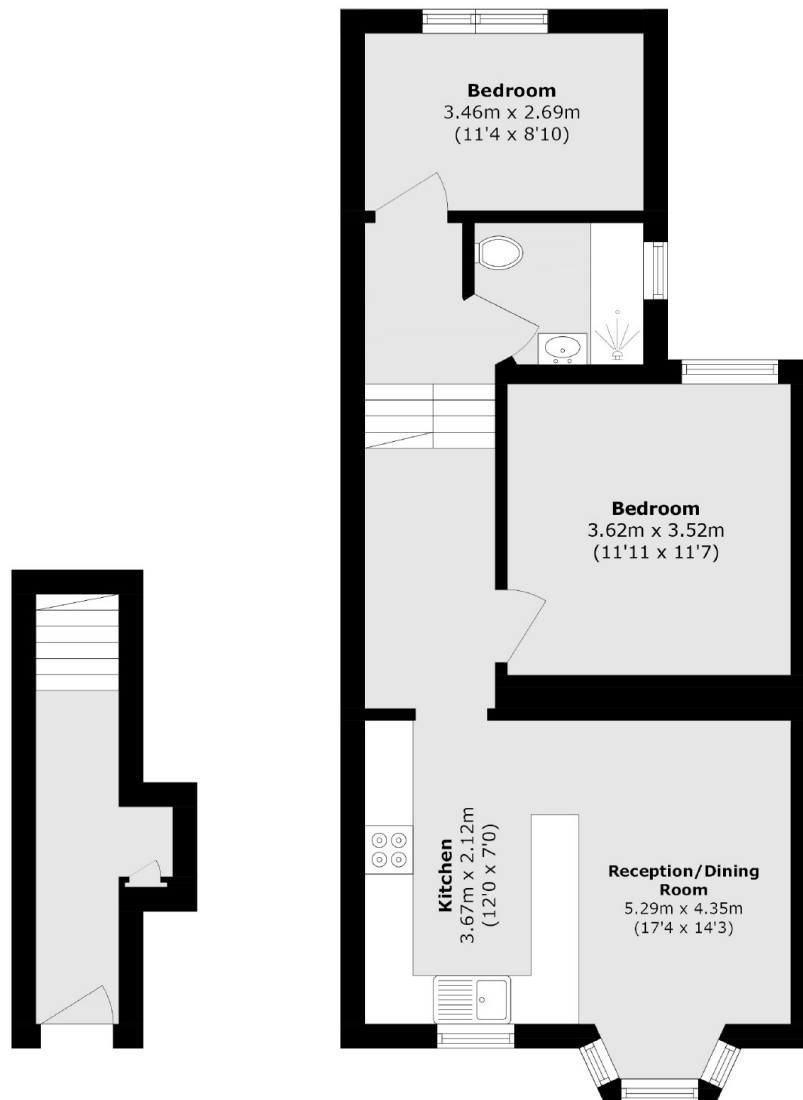
A two double bedroom first floor Victorian conversion offering an open plan living area with a well-fitted kitchen and a modern bathroom. The property comes with the potential to convert the loft space (STPP).

Ashford Road is a residential street conveniently located within easy reach of Cricklewood Thameslink station, with underground links from nearby Willesden Green providing connections into Central London and the city.

Features

- Two Double Bedrooms
- First Floor
- Victorian Conversion
- Open-Plan Living Area
- Modern Bathroom
- Potential For Loft Conversion

Ashford Road,
London, NW2



Ground Floor

First Floor

Total area (approx.): 64.1 sq. m (689.9 sq. ft)