



Shoot Up Hill, NW2

£611 Per week

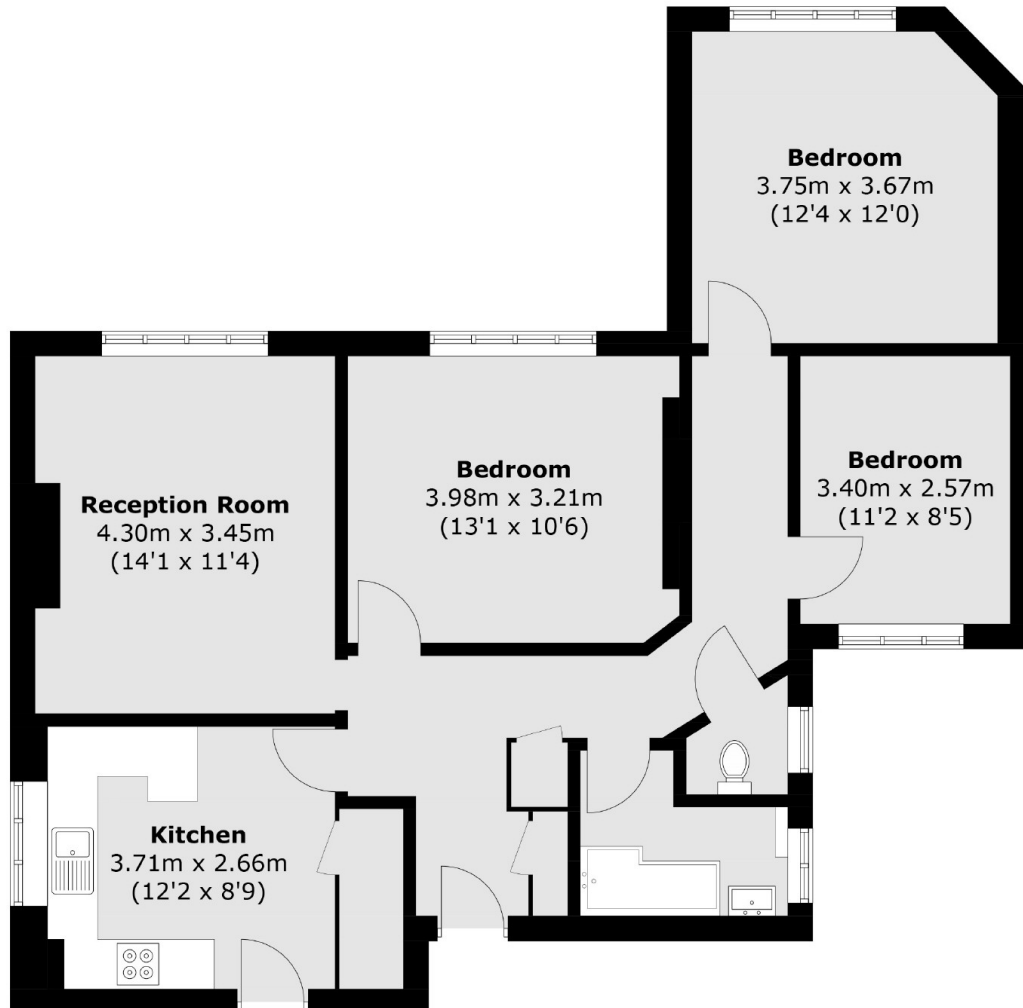
Located on the third floor (with lift access) of a beautiful red brick mansion block, this spacious three double bedroom flat boasts high ceilings and plenty of natural light throughout. The flat offers a separate reception, modern kitchen and bathroom.

Located close to great schools and minutes from Jubilee line, London Overground, and Thameslink. An array of amenities in fashionable West Hampstead, Kilburn, and Cricklewood Broadway are within easy reach.

Features

- Three Double Bedrooms
- Third Floor Flat
- Lift Access
- Separate Reception Room
- Bathroom And WC
- High Ceilings

Shoot Up Hill, London, NW2



Total area (approx.): 87.0 sq. m (936.5 sq. ft)

Dexters

Cricklewood
28-30 Cricklewood Broadway
London
NW2 3HD
Lettings
020 7794 1730

Energy Rating: C. We aim to make our particulars both accurate and reliable. However they are not guaranteed; nor do they form part of an offer or contract. If you require clarification on any points then please contact us, especially if you're traveling some distance to view. Please note that appliances and heating systems have not been tested and therefore no warranties can be given as to their good working order.

 **RICS** | Regulated
Estate Agent
and Letting Agent

[dexters.co.uk](https://www.dexters.co.uk)