



Mapesbury Road, NW2

£375,000

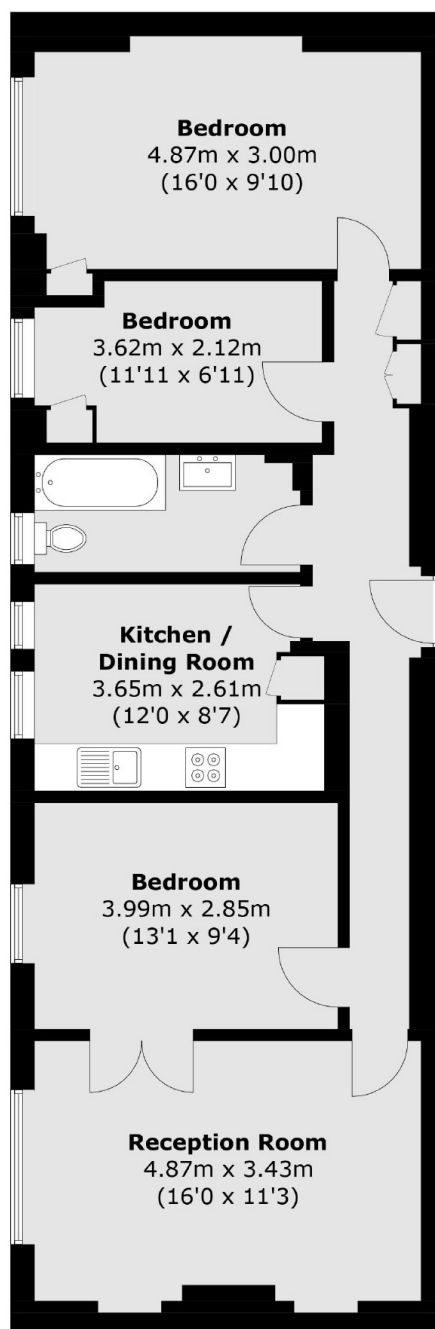
Situated on the ground floor of a well-maintained purpose built building and spanning over 800sqft, this generously sized flat offers three bedrooms and a separate kitchen. The development has beautiful communal gardens.

Thanet Lodge is set on a residential tree lined street, located in Brondesbury Park and is a short distance from the Kilburn, Brondesbury, and Queens Park stations, with a range of shops, cafes, and restaurants nearby.

Features

- Three Bedrooms
- Separate Kitchen
- Ground Floor Flat
- Communal Gardens
- Leasehold
- Great Location

Mapesbury Road, London, NW2



Total area (approx.): 79.2 sq. m (852.5 sq. ft)

Dexters

Cricklewood
28-30 Cricklewood Broadway
London
NW2 3HD
Sales
020 7794 7710

Energy Rating: D. We aim to make our particulars both accurate and reliable. However they are not guaranteed; nor do they form part of an offer or contract. If you require clarification on any points then please contact us, especially if you're traveling some distance to view. Please note that appliances and heating systems have not been tested and therefore no warranties can be given as to their good working order.

 **RICS** | Regulated
Estate Agent
and Letting Agent

[dexters.co.uk](https://www.dexters.co.uk)