



Shoot Up Hill, NW2

£480,000

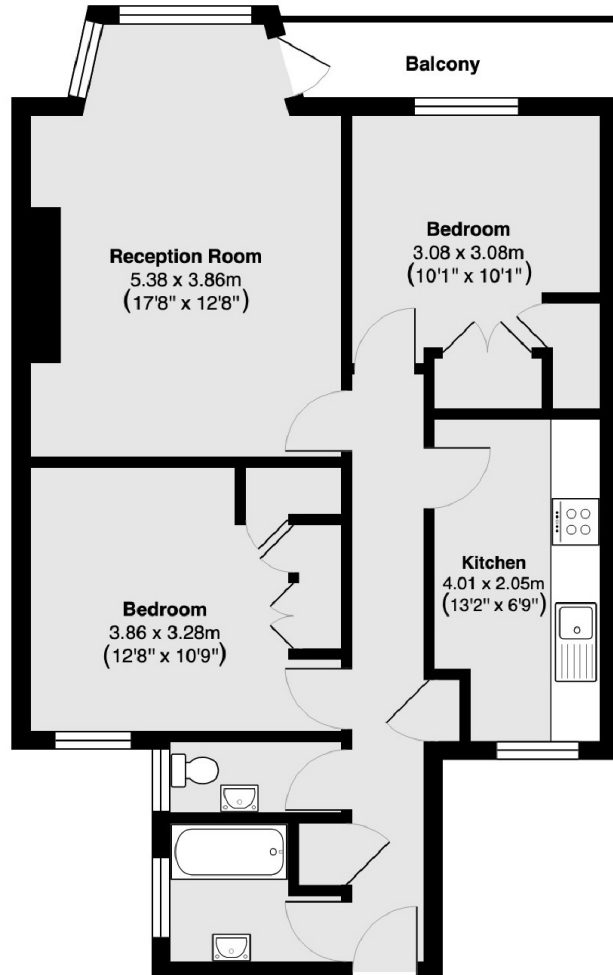
Located on the third floor (with lift access) of a beautiful red brick mansion block is this spacious two double bedroom flat boasting high ceilings and plenty of natural light throughout. The flat offers a separate reception with a balcony overlooking the communal garden.

Mapesbury Court is located a short distance from Cricklewood Broadway and its variety of amenities such as gyms, shops and cafes. Kilburn (Jubilee Line) Station is also close by. West Hampstead is easily accessible.

Features

- Two Double Bedrooms
- Third Floor
- Balcony
- Lift Access
- Leasehold
- No Onward Chain

Shoot Up Hill, London, NW2



Total area 66.2 sq m (approx) (713 sq ft approx)

Balcony 3.7 sq m (approx) (40 sq ft approx)

Dexters

Cricklewood
28-30 Cricklewood Broadway
London
NW2 3HD
Sales
020 7794 7710

Energy Rating: D. We aim to make our particulars both accurate and reliable. However they are not guaranteed; nor do they form part of an offer or contract. If you require clarification on any points then please contact us, especially if you're traveling some distance to view. Please note that appliances and heating systems have not been tested and therefore no warranties can be given as to their good working order.

 **RICS** | Regulated
Estate Agent
and Letting Agent

[dexters.co.uk](https://www.dexters.co.uk)