



## Dollis Hill Lane, NW2

£403 Per week

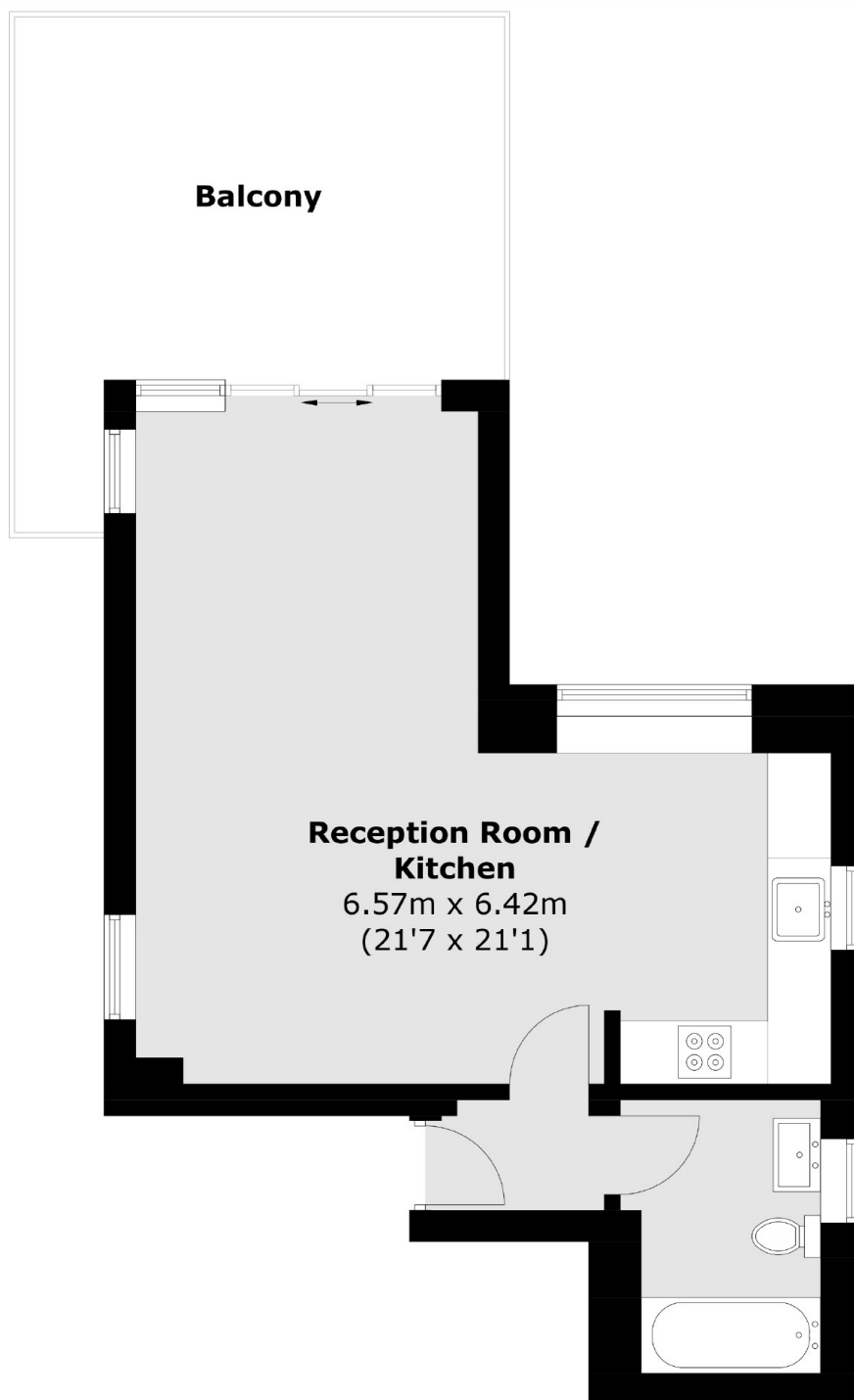
This bright and spacious top floor studio apartment is ideally situated on Dollis Hill Lane in this brand new development. The apartment is open plan with a modern integrated kitchen and sliding doors leading to private terrace.

Jaffrey Court is ideally situated with a variety of amenities in Dollis Hill, Willesden Green, Cricklewood and Brent Cross. The A5, A406 and M1 are also nearby allowing easy access in and out of London.

### Features

- New Development
- Large Studio
- Tiled Bathroom
- Integrated Kitchen
- Private Terrace
- Ideally Situated

# Dollis Hill Lane, London, NW2



Total area (approx.): 38.7 sq. m (416.6 sq. ft)  
Balcony area (approx.): 17.3 sq. m (186.2 sq. ft)

## Dexters

Cricklewood  
28-30 Cricklewood Broadway  
London  
NW2 3HD  
Lettings  
020 7794 1730

Energy Rating: . We aim to make our particulars both accurate and reliable. However they are not guaranteed; nor do they form part of an offer or contract. If you require clarification on any points then please contact us, especially if you're traveling some distance to view. Please note that appliances and heating systems have not been tested and therefore no warranties can be given as to their good working order.

 **RICS** | Regulated  
Estate Agent  
and Letting Agent

[dexters.co.uk](https://www.dexters.co.uk)