



Park Avenue, NW2

£325,000

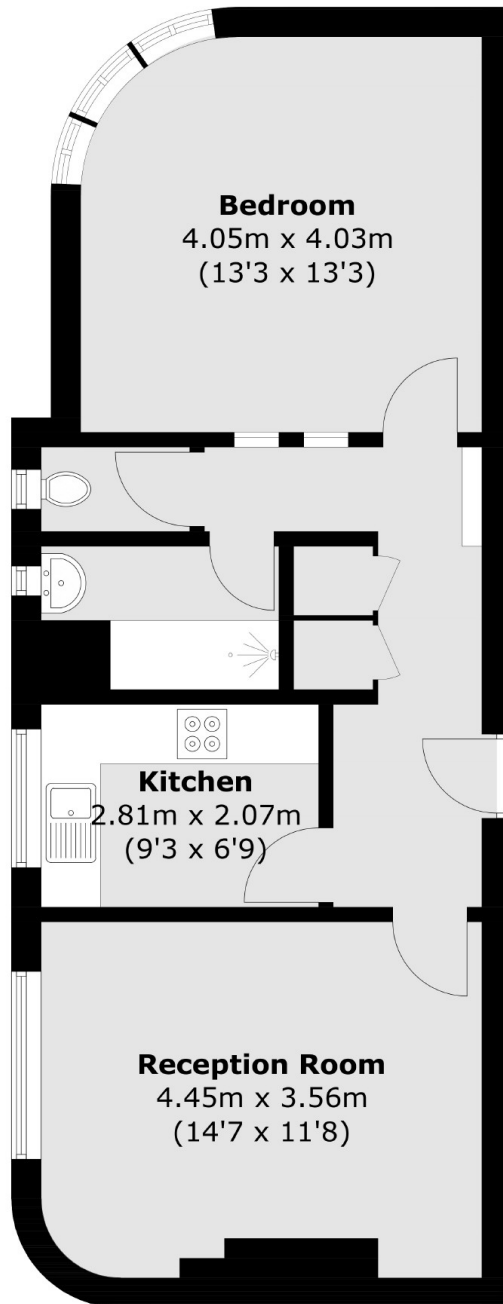
This one bedroom, third floor flat is situated in Willesden Green. The property has a bright and spacious reception room, a separate fitted kitchen, a bathroom with a shower and bathtub, and an incredibly sized double bedroom.

Park Avenue is well situated with Willesden Green with many boutique cafés, restaurants, and amenities nearby. There are also excellent transport links with Willesden Green station and many bus routes on your doorstep.

Features

- Third floor flat
- One Bedroom
- Spacious Reception
- Fitted Kitchen
- Tiled Bathroom
- Good Storage

Park Avenue, London, NW2



Third Floor

Total area (approx.): 53.6 sq. m (576.9 sq. ft)