



Temple Road, NW2

£496 Per week

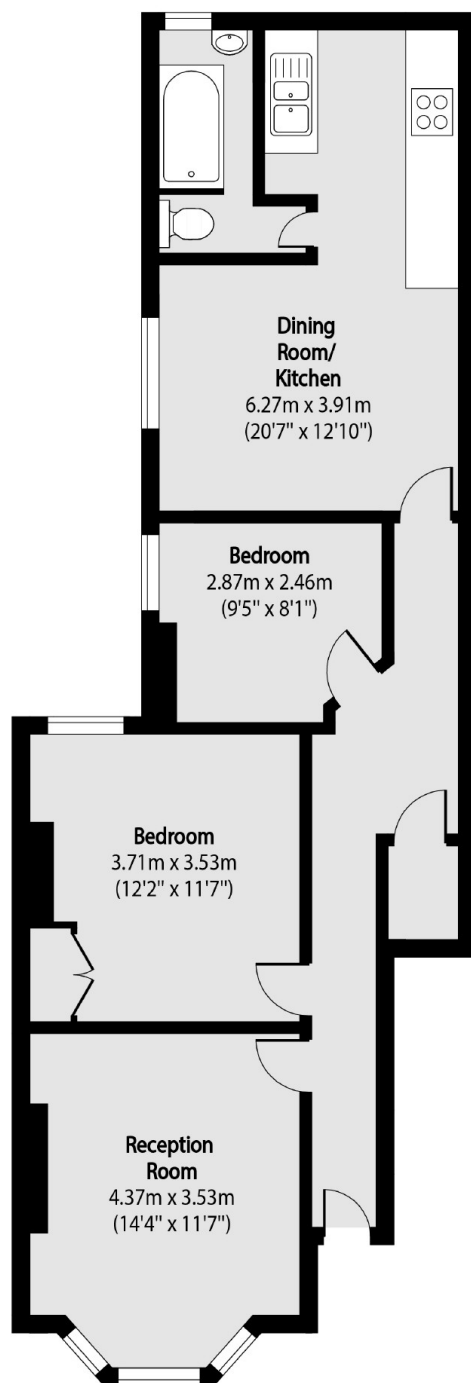
This newly redecorated two bedroom ground floor garden maisonette is ideally situated in the heart of Cricklewood. The property has a spacious reception, a separate kitchen with lounge/dining area, good storage space and direct access to a private garden.

Wotton Road is ideally situated close to many local amenities; deli's, shops and cafés. Gladstone Park is moments away, and you also have good transport links to the city and easy motorway access. Willesden Green station and Cricklewood Thameslink are also nearby.

Features

- Two Bedrooms
- Private Garden
- Spacious Reception
- Separate Kitchen
- Ideally Situated
- Excellent Condition

Temple Road,
London, NW2



Total area (approx): 72.09 sq m (776 sq. ft)

Dexters

Cricklewood
28-30 Cricklewood Broadway
London
NW2 3HD
Lettings
020 7794 1730

Energy Rating: . We aim to make our particulars both accurate and reliable. However they are not guaranteed; nor do they form part of an offer or contract. If you require clarification on any points then please contact us, especially if you're traveling some distance to view. Please note that appliances and heating systems have not been tested and therefore no warranties can be given as to their good working order.

 **RICS** | Regulated
Estate Agent
and Letting Agent

[dexters.co.uk](https://www.dexters.co.uk)