



## Oberman Road, NW10

### £276,500

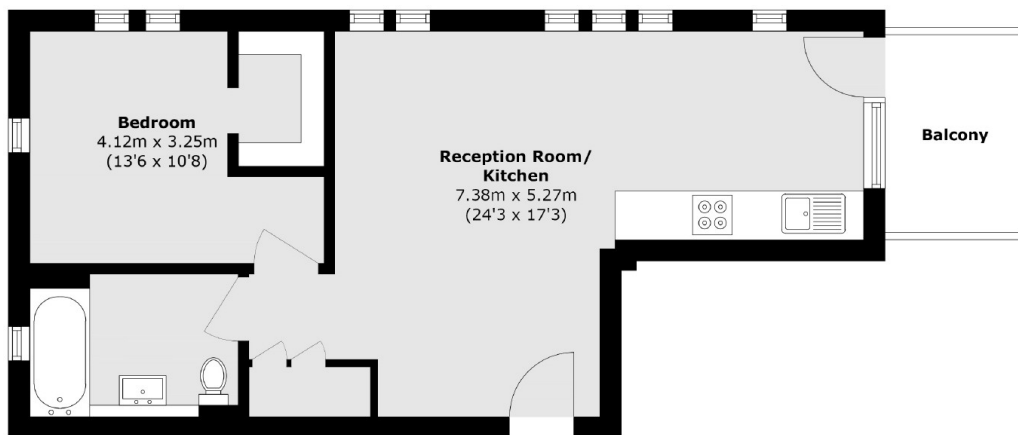
**\*\*SHARED OWNERSHIP\*\*** This one-bedroom sixth floor apartment features a spacious open-plan living area with a well-equipped kitchen, underfloor heating, and abundant natural light. The property further benefits from ample storage and a private balcony with beautiful views.

Located in-between leafy Dollis Hill and bustling Neasden with its lovely open spaces, including Brent Reservoir and Gladstone Park. Dollis Hill (Jubilee Line) Underground station is also a short walk away.

### Features

- Sixth Floor Apartment
- Open-Plan Living Area
- Underfloor Heating
- Ample Storage
- Private Balcony
- Lift Access

Oberman Road,  
London, NW10



Total area (approx.): 53.9 sq. m (580.1 sq. ft)

**Dexters**

Cricklewood  
28-30 Cricklewood Broadway  
London  
NW2 3HD  
Sales  
020 7794 7710

Energy Rating: B. We aim to make our particulars both accurate and reliable. However they are not guaranteed; nor do they form part of an offer or contract. If you require clarification on any points then please contact us, especially if you're traveling some distance to view. Please note that appliances and heating systems have not been tested and therefore no warranties can be given as to their good working order.

 **RICS** | Regulated  
Estate Agent  
and Letting Agent

[dexters.co.uk](https://www.dexters.co.uk)