



Oberman Road, NW10

£276,500

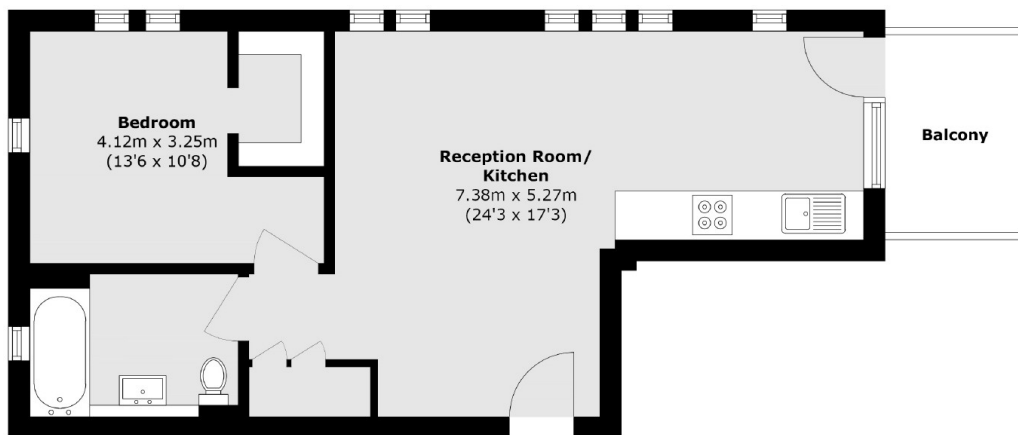
****SHARED OWNERSHIP**** This one-bedroom sixth floor apartment features a spacious open-plan living area with a well-equipped kitchen, underfloor heating, and abundant natural light. The property further benefits from ample storage and a private balcony with beautiful views.

Located in-between leafy Dollis Hill and bustling Neasden with its lovely open spaces, including Brent Reservoir and Gladstone Park. Dollis Hill (Jubilee Line) Underground station is also a short walk away.

Features

Sixth Floor Apartment
Open-Plan Living Area
Underfloor Heating
Ample Storage
Private Balcony
Lift Access

Oberman Road,
London, NW10



Total area (approx.): 53.9 sq. m (580.1 sq. ft)

Dexters

Cricklewood
28-30 Cricklewood Broadway
London
NW2 3HD
Sales
020 7794 7710

Energy Rating: B. We aim to make our particulars both accurate and reliable. However they are not guaranteed; nor do they form part of an offer or contract. If you require clarification on any points then please contact us, especially if you're traveling some distance to view. Please note that appliances and heating systems have not been tested and therefore no warranties can be given as to their good working order.

 **RICS** | Regulated
Estate Agent
and Letting Agent

[dexters.co.uk](https://www.dexters.co.uk)