



## Park Avenue North, NW10

£484 Per week

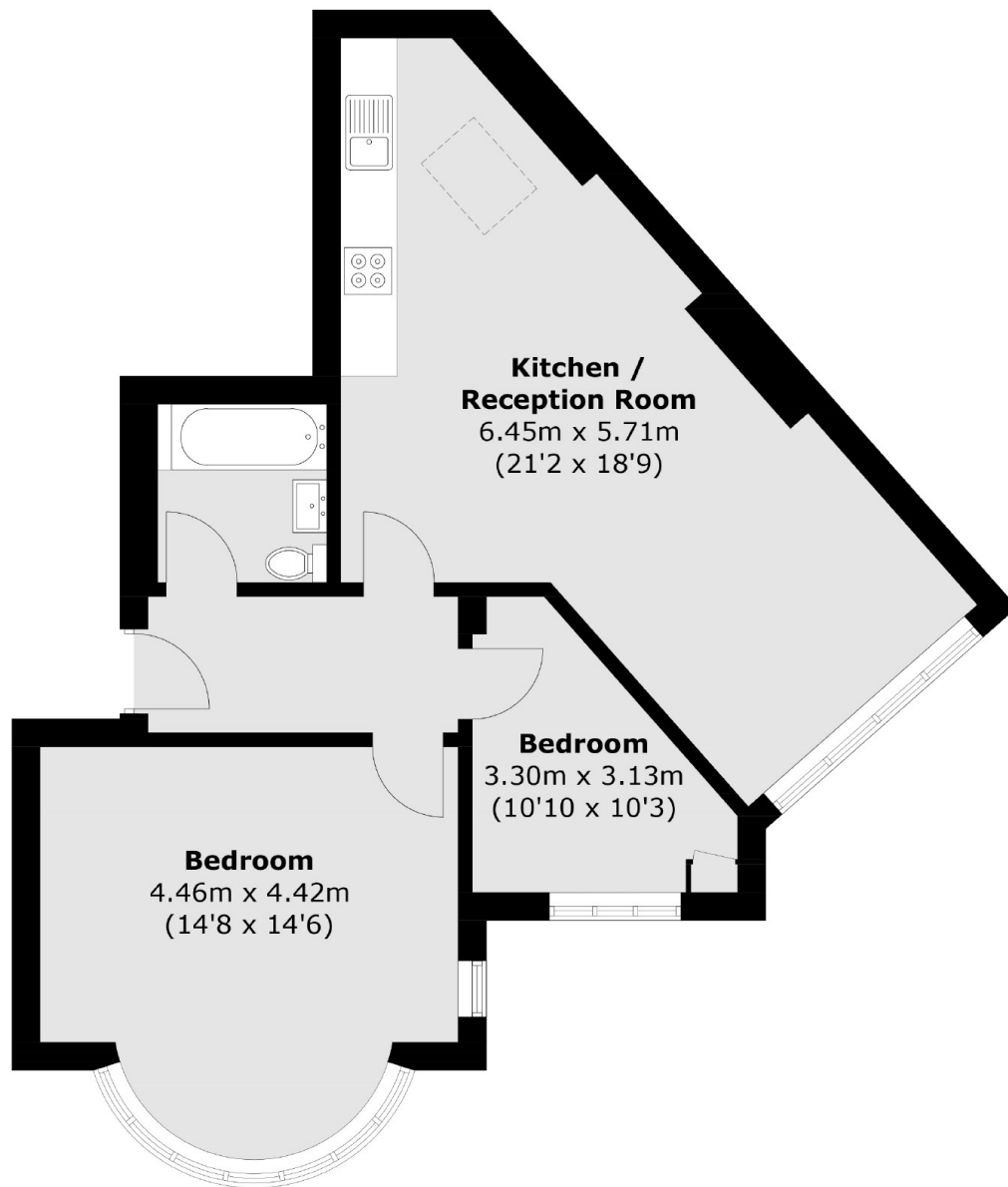
This spacious two bedroom ground floor conversion is ideally situated in Willesden Green. The flat has a open plan living area with a modern integrated kitchen, a spacious primary bedroom, a further bedroom and a tiled family bathroom.

Park Avenue North is ideally situated close to many local amenities, deli's, shops and cafés. Gladstone Park is moments away and you also have good transport links to the city and easy motorway access. Willesden Green station and Cricklewood Thameslink are also near.

### Features

Two Bedroom  
Family Bathroom  
Open Plan  
Integrated Kitchen  
Gladstone Park  
Ideally Located

Park Avenue North,  
London, NW10



Total area (approx.): 63.1 sq. m (679.2 sq. ft)