



## Ivy Road, NW2

### £900,000

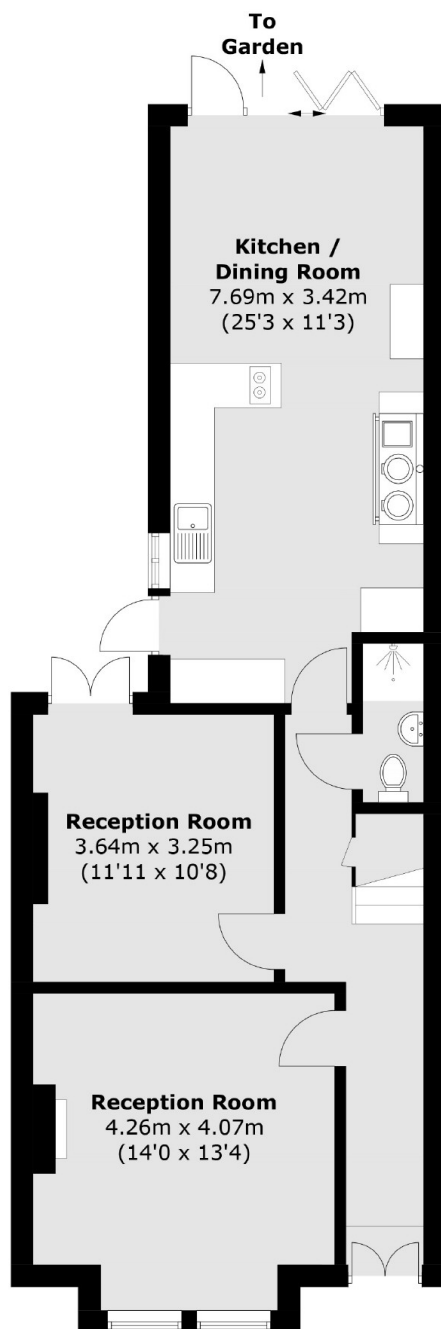
A three double bedroom end of terrace period family home, with two reception rooms, two bathrooms, an open-plan modern kitchen/dining room with scope to extend the property to the rear and convert the loft.

Ivy Road is a residential street located a short distance from multiple transport links, including Cricklewood Station (Thameslink) and a number of bus routes. A variety of shops, eateries, and facilities can be found at Brent Cross Shopping Centre, which is just 1.9 miles away.

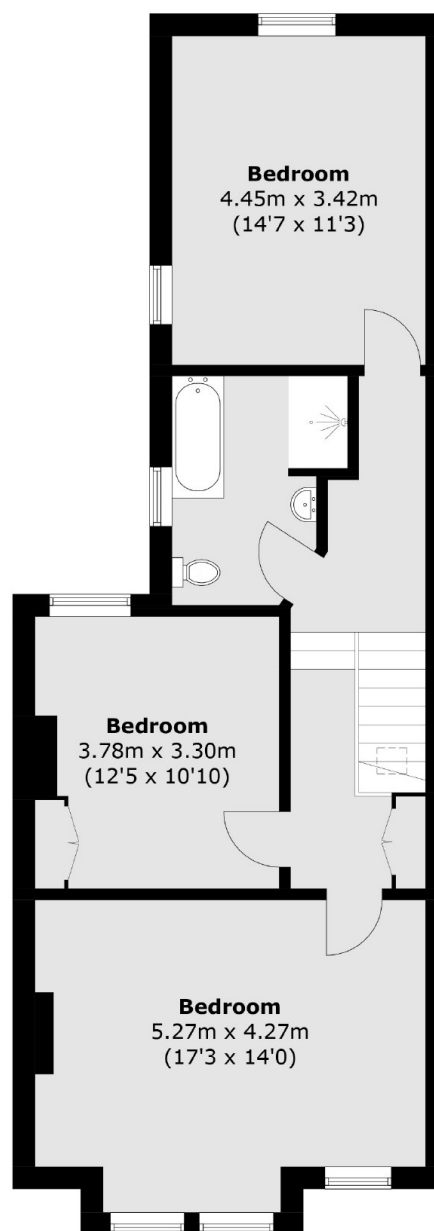
### Features

- Three Double Bedrooms
- Two Reception Rooms
- Kitchen/Dining Room
- Two Bathrooms
- Potential For Extension (STPP)
- End Of Terrace

# Ivy Road, London, NW2



**Ground Floor**



**First Floor**

Total area (approx.): 136.1 sq. m (1,465 sq. ft)

## Dexters

Cricklewood  
28-30 Cricklewood Broadway  
London  
NW2 3HD  
Sales  
020 7794 7710

Energy Rating: E. We aim to make our particulars both accurate and reliable. However they are not guaranteed; nor do they form part of an offer or contract. If you require clarification on any points then please contact us, especially if you're traveling some distance to view. Please note that appliances and heating systems have not been tested and therefore no warranties can be given as to their good working order.

 **RICS** | Regulated  
Estate Agent  
and Letting Agent

[dexters.co.uk](https://www.dexters.co.uk)