



## Dairyman Close, NW2

£260,000

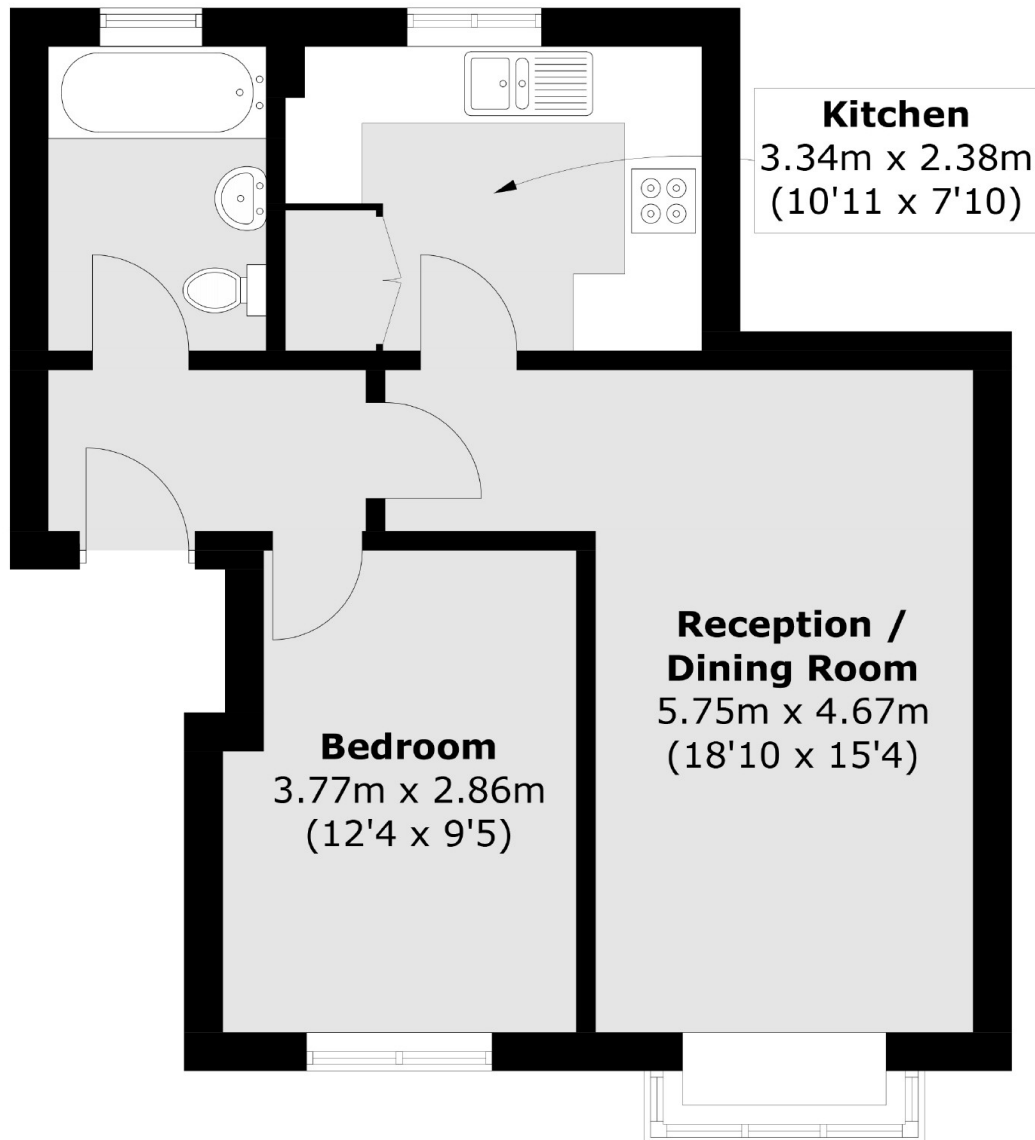
A lovely one bedroom first floor apartment within this gated development, ideal for a first time buyer or as an investment property, complete with a large reception, separate kitchen and bathroom, share of freehold, and no onward chain.

Dairyman Close is situated within a short distance of Cricklewood Broadway and Thameslink station, with the multiple shopping, transport, and restaurant amenities to hand.

### Features

- Share Of Freehold
- Gated Development
- First Floor
- Chain Free
- Gated Parking
- One Bedroom

# Dairyman Close, London, NW2



Total area (approx.): 45.5 sq. m ( 489.8 sq. ft)

## Dexters

Cricklewood  
28-30 Cricklewood Broadway  
London  
NW2 3HD  
Sales  
020 7794 7710

Energy Rating: C. We aim to make our particulars both accurate and reliable. However they are not guaranteed; nor do they form part of an offer or contract. If you require clarification on any points then please contact us, especially if you're traveling some distance to view. Please note that appliances and heating systems have not been tested and therefore no warranties can be given as to their good working order.

 **RICS** | Regulated  
Estate Agent  
and Letting Agent

dexters.co.uk