



Anson Road, NW2

£450,000

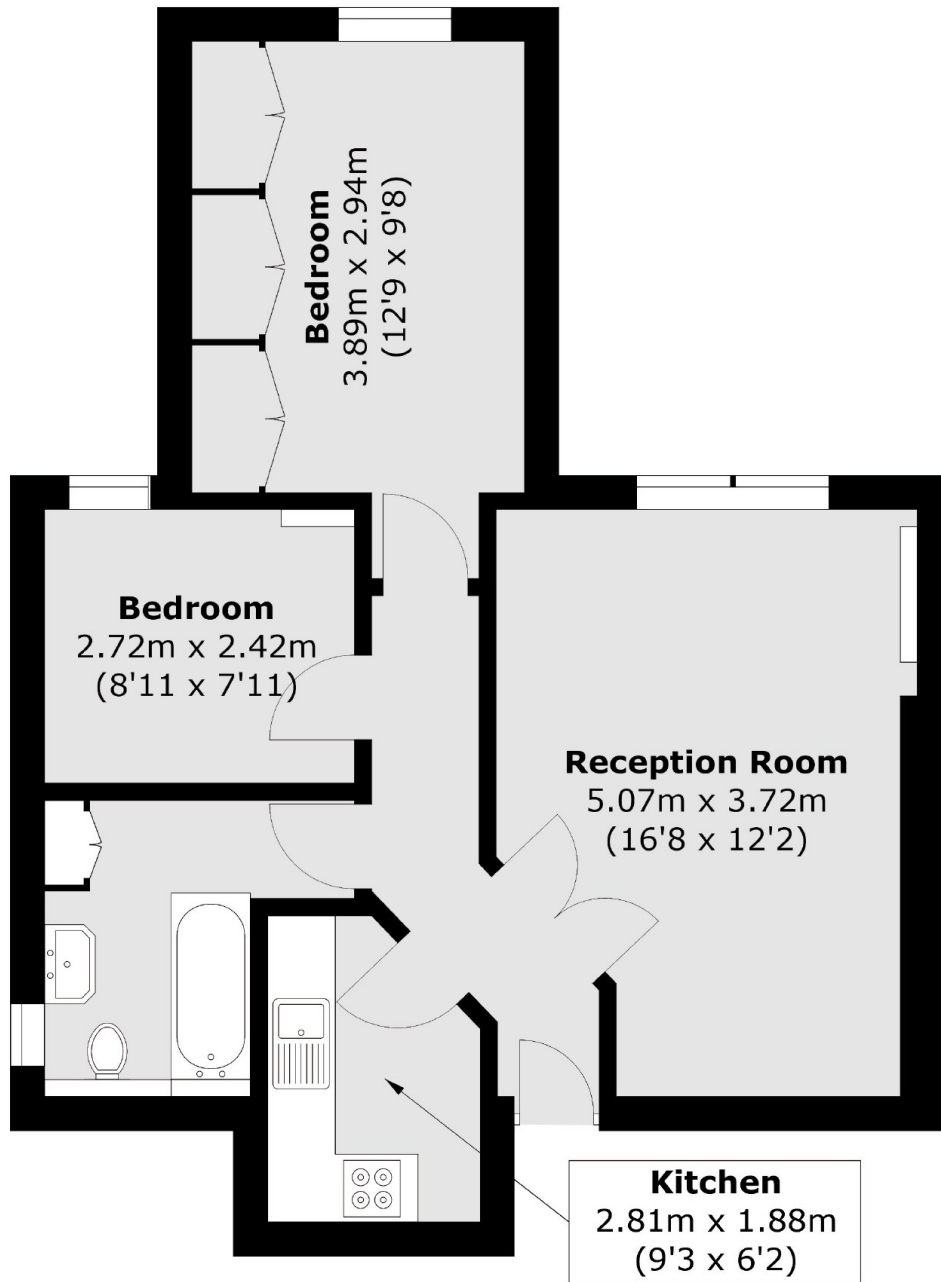
A sought after first floor period conversion measuring in excess of 580 sq.ft. With two bedrooms, a large reception room, a separate kitchen, a modern bathroom and no onward chain.

Anson Road boasts excellent transport links with Cricklewood station, multiple bus routes, the North Circular and the M1 nearby. There is a wide selection of schools and local parks close by, including the secluded Mapesbury Dell and the 86-acre Gladstone Park.

Features

Period Conversion
First Floor
Two Bedrooms
Separate Kitchen
Excess of 580 Sq.Ft.
No Onward chain

Anson Road, London, NW2



Total area (approx.): 54.4 sq. m (585.5 sq. ft)