

Chapter Road, NW2

£775,000

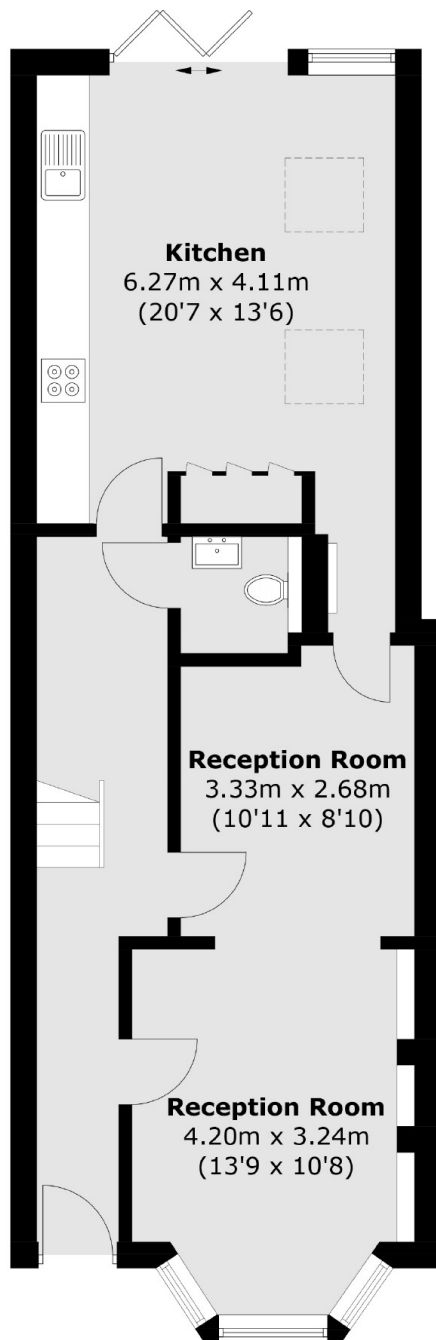
A three double bedroom family home, lovingly renovated throughout. With a double reception room, a large fully extended open plan kitchen/dining room, bathroom and two additional toilets. There is further scope to convert the loft (STPP).

Chapter Road is ideally located just 0.4 miles from Dollis Hill station (Zone 3) and 0.5 miles from Willesden Green (Zone 2) and its range of local amenities, including Gail's Bakery.

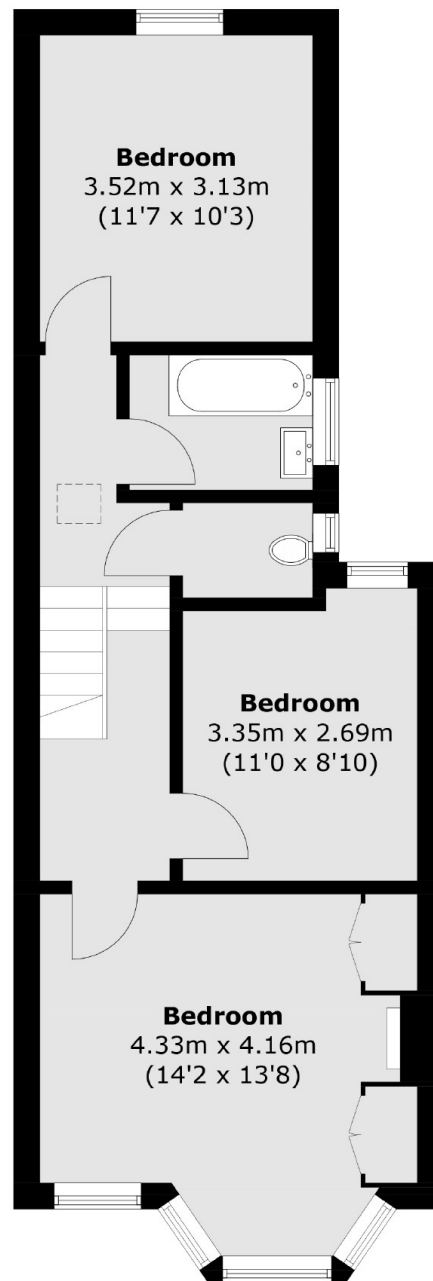
Features

- Three Double Bedrooms
- Open-Plan Kitchen/Dining
- Double Reception Room
- Bathroom And Two WC's
- Potential To Convert The Loft
- Close To Transport

Chapter Road, London, NW2



Ground Floor



First Floor

Total area (approx.): 109.6 sq. m (1,179.8 sq. ft)

Dexters

Cricklewood
28-30 Cricklewood Broadway
London
NW2 3HD
Sales
020 7794 7710

Energy Rating: D. We aim to make our particulars both accurate and reliable. However they are not guaranteed; nor do they form part of an offer or contract. If you require clarification on any points then please contact us, especially if you're traveling some distance to view. Please note that appliances and heating systems have not been tested and therefore no warranties can be given as to their good working order.

 **RICS** | Regulated
Estate Agent
and Letting Agent

[dexters.co.uk](https://www.dexters.co.uk)