



Mapesbury Road, NW2

£530,000

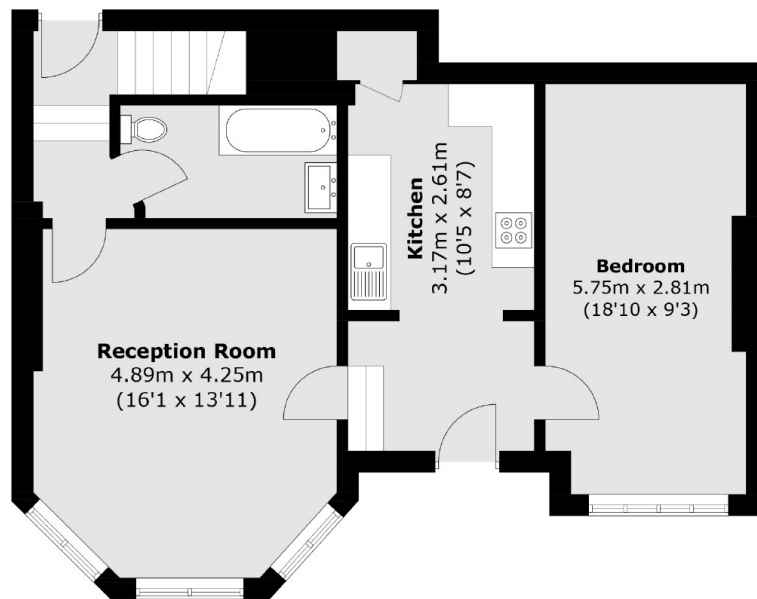
A three double bedroom, split-level period conversion offering accommodation in excess of 1000 sqft. With its own front door, a separate kitchen, a reception room with a large bay window, a family bathroom, off-street parking, and access to gardens.

Mapesbury Road is just 0.3 miles from the Mapesbury Dell as well as Kilburn underground station and Brondesbury station. The ever-popular West Hampstead and its variety of shops are a short distance away.

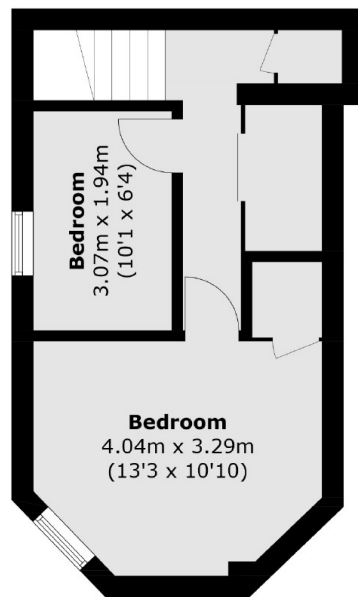
Features

- Three Double Bedrooms
- Separate Kitchen
- Reception Room
- Off-Street Parking
- Split-Level
- Period Conversion

Mapesbury Road, London, NW2



Ground Floor



Lower Ground Floor

Total area (approx.): 93.0 sq. m (1,001.1 sq. ft)