



Richborough Road, NW2

£925,000

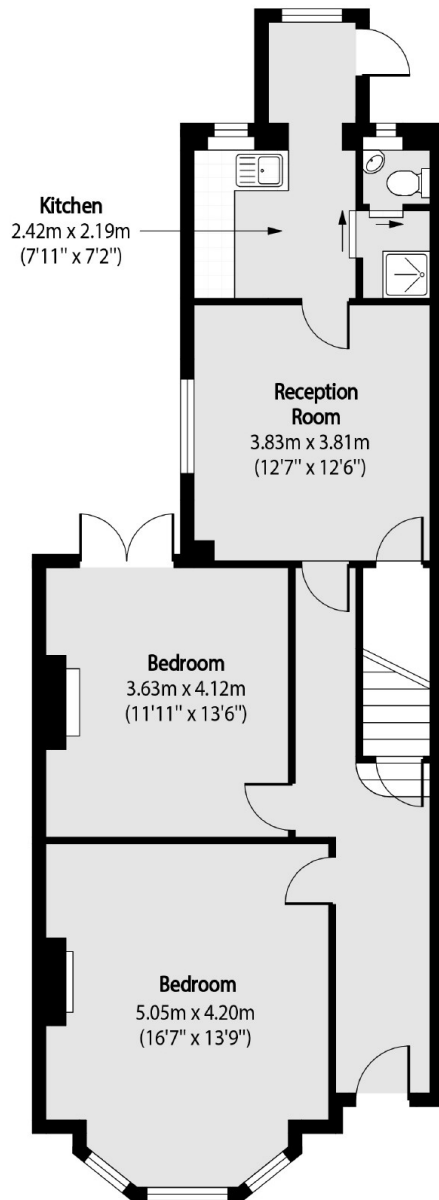
A semi-detached Victorian property currently set up as two flats both with two double bedrooms. There is a south-facing garden and potential to further extend the accommodation on offer (STPP).

Richborough Road is ideally located within easy reach of the ever-popular West Hampstead with its boutique cafes, restaurants, and other local amenities. Transport links are easily available, with numerous bus routes and underground stations close by.

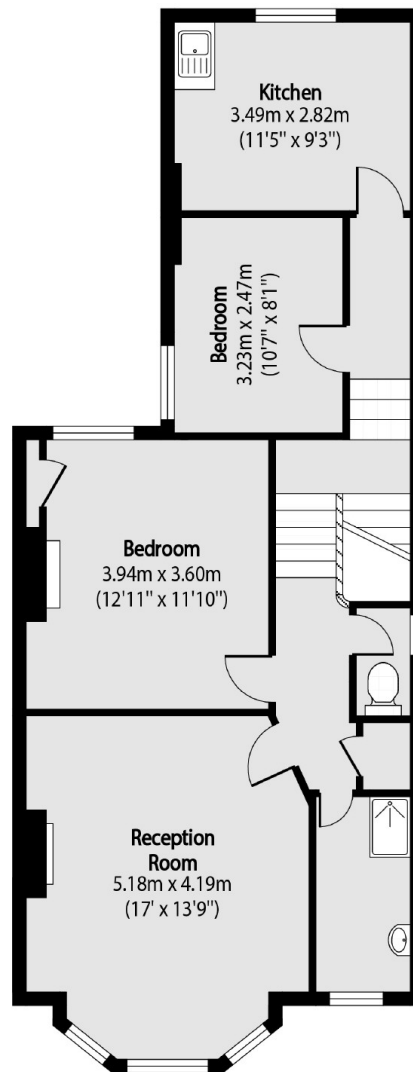
Features

- Victorian
- Semi-Detached
- Two Flats
- South Facing Garden
- Potential To Extend (STPP)
- No Onward Chain

Richborough Road, London, NW2



Ground Floor



First Floor

Total area (approx): 143.85 sq m (1548 sq. ft)