



## Newton Road, NW2

### £550,000

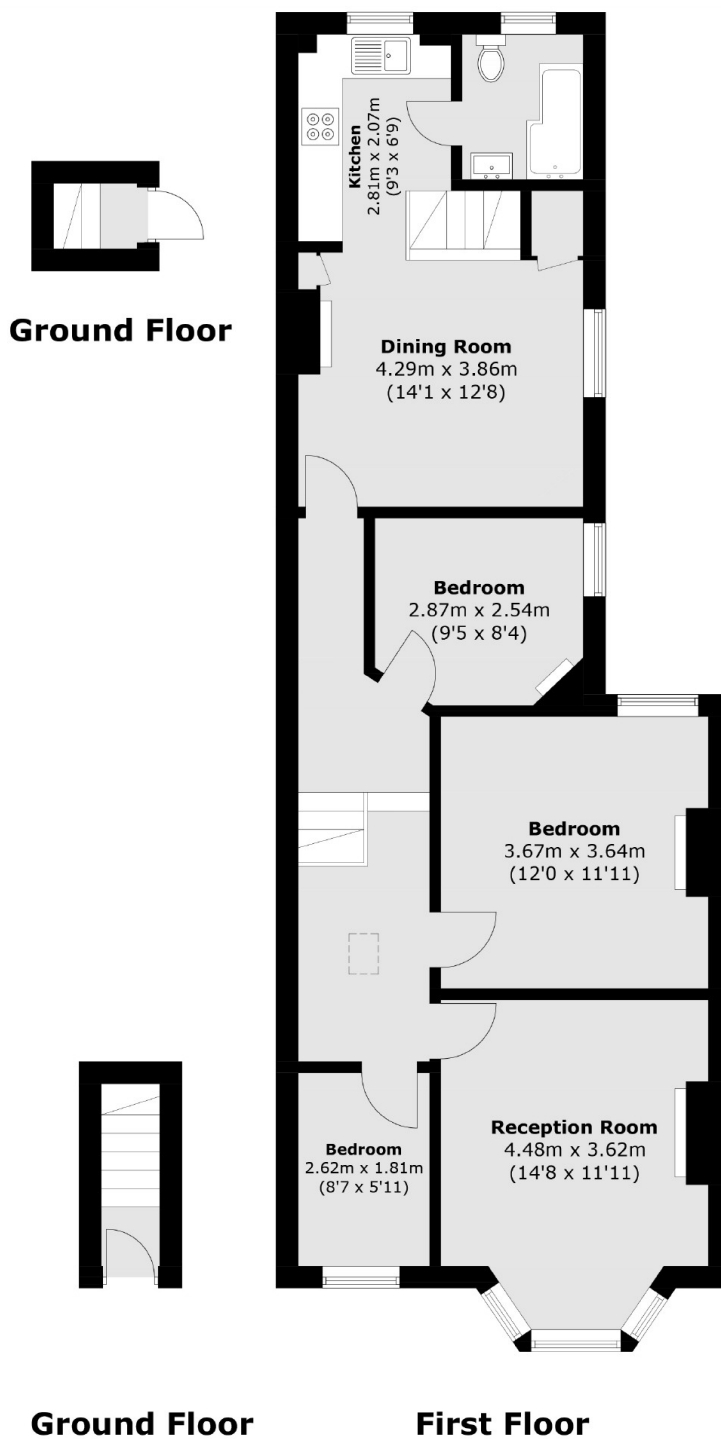
Situated on a sought-after road is this renovated first floor maisonette. The flat offers three bedrooms, a bright character-filled reception, a separate kitchen/diner, a modern bathroom, and direct access to a private garden.

Newton Road is a short distance from the open spaces and outdoor activities of Gladstone Park. Cricklewood Station (Thameslink Railway) and the local amenities of Cricklewood are 0.7 miles away.

### Features

- Three Bedrooms
- Private Garden
- Own Entrance
- First Floor Maisonette
- Share Of Freehold
- Recently Renovated

# Newton Road, London, NW2



Total area (approx.): 81.8 sq. m (880.4 sq. ft)

## Dexters

Cricklewood  
28-30 Cricklewood Broadway  
London  
NW2 3HD  
Sales  
020 7794 7710

Energy Rating: D. We aim to make our particulars both accurate and reliable. However they are not guaranteed; nor do they form part of an offer or contract. If you require clarification on any points then please contact us, especially if you're traveling some distance to view. Please note that appliances and heating systems have not been tested and therefore no warranties can be given as to their good working order.

 **RICS** | Regulated  
Estate Agent  
and Letting Agent

[dexters.co.uk](https://www.dexters.co.uk)