



Shoot Up Hill, NW2

£495,000

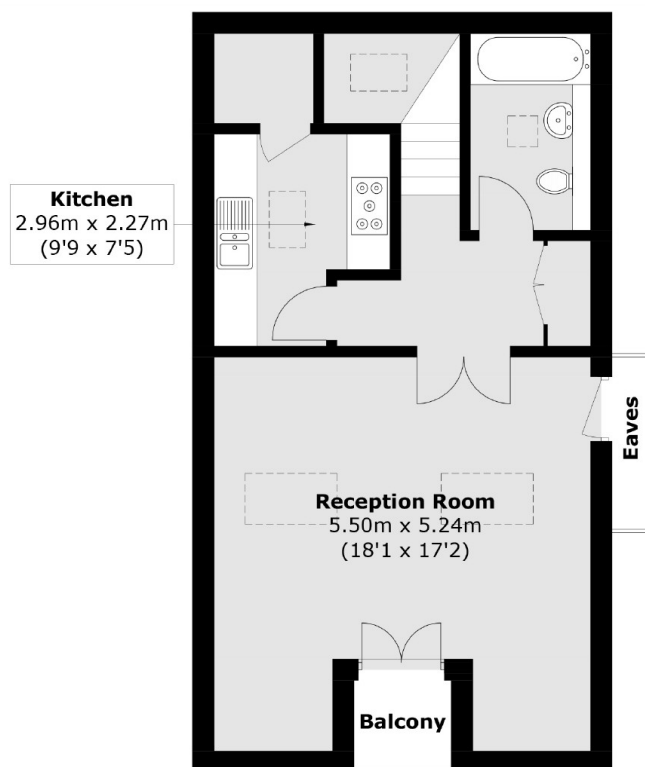
This two double bedroom, two bathroom split-level flat is located within a desirable period conversion on a favourable residential road. The flat benefits from a good-size reception and separate kitchen and comes with off-street parking and no onwards chain.

Ideally located close to great schools such as Mulberry House School, and minutes from Jubilee line, London Overground, and Thameslink. An array of amenities in fashionable West Hampstead, Kilburn, and Cricklewood Broadway are within easy reach.

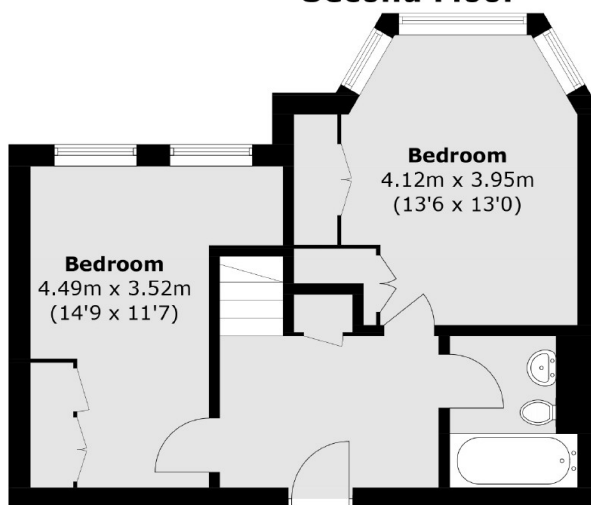
Features

- Split-Level
- Two Double Bedrooms
- Separate Kitchen
- New Lease
- No Onward Chain
- Off-Street Parking

Shoot Up Hill, London, NW2



Second Floor



First Floor

Total area (approx.): 90.2 sq. m (970.8 sq. ft)
Balcony: 1.7 sq. m (18.3 sq. ft)
(Excluding Eaves)