



Fordwych Road, NW2

£200,000

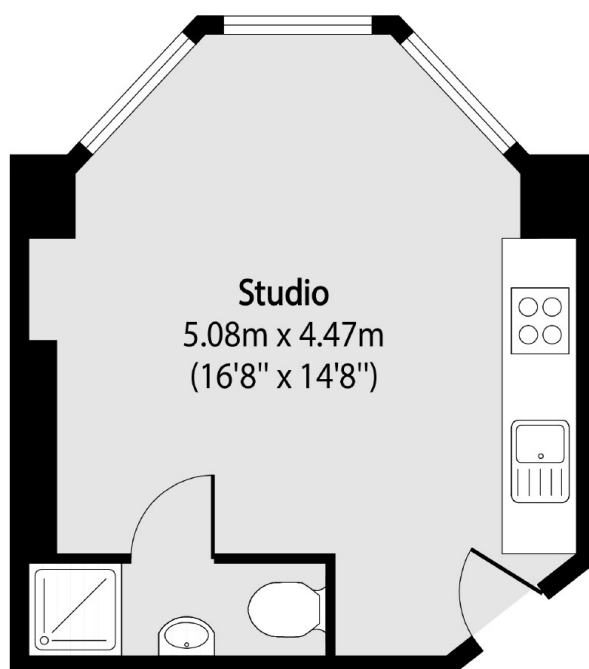
Located close to the ever-popular West Hampstead, this ground floor studio flat is perfect as a first time buy or as an investment. The flat offers ample storage above the shower room and an integrated kitchen.

Fordwych Road is close to multiple transport links, including Kilburn station (Jubilee line Zone 2) and Cricklewood station (Thameslink), as well as the range of boutique amenities that West Hampstead has to offer.

Features

- Studio
- Good Investment
- Close to Transport
- Ground Floor
- Chain Free
- Leasehold

Fordwych Road,
London, NW2



Total area (approx): 19.88 sq m (214 sq. ft)