

Chapter Road, NW2

£450,000

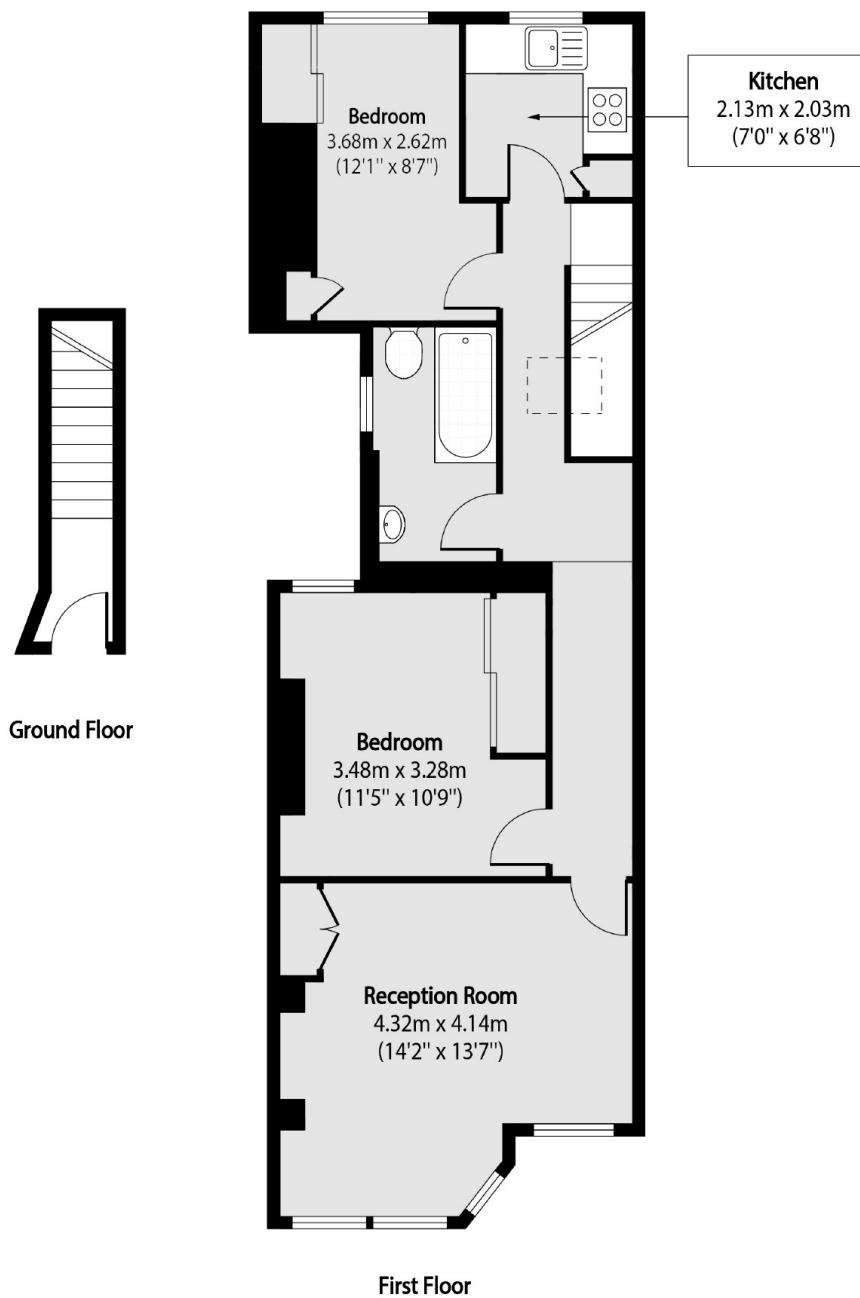
A first floor two double bedroom conversion with a separate reception room and a modern kitchen and bathroom. The property further benefits from a share of freehold and a demised loft which is boarded allowing for ample storage and offering potential to extend (subject to planning permission).

Chapter Road is a quiet, residential street a short distance from the variety of shops, cafes, and restaurants that Willesden Green has to offer. Willesden Green station (Jubilee line Zone 2) provides easy access to the City.

Features

- First Floor
- Two Double Bedrooms
- Period Conversion
- Separate Kitchen
- Share Of Freehold
- Extension Potential (STPP)

Chapter Road, London, NW2



Total area (approx): 61.9 sq m (666 sq. ft)