



## Lechmere Road, NW2

### £650,000

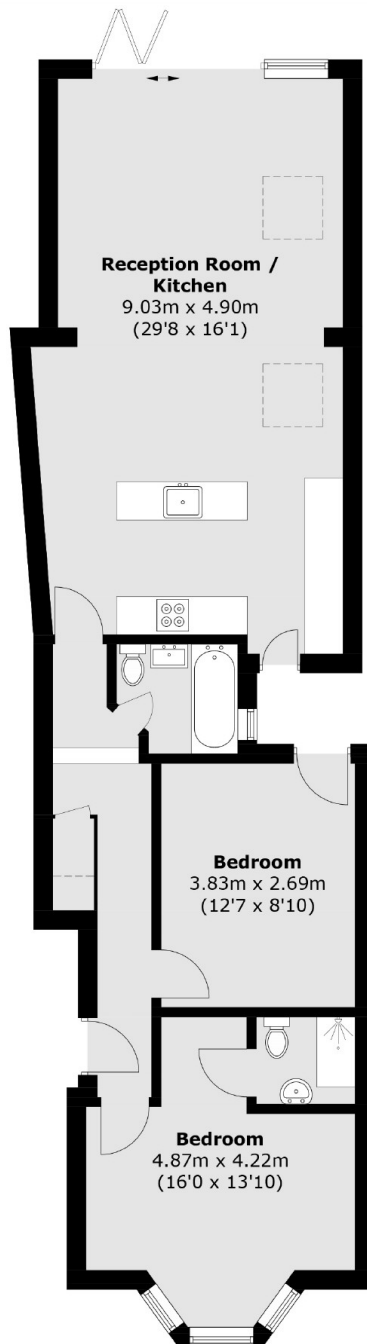
A two double bedroom, two bathroom ground floor conversion, newly renovated to a high standard throughout. Offering an extended open plan living area with a well-fitted kitchen and a private garden. The property comes with a share of the freehold and no onward chain.

Lechmere Road is a quiet residential street a short distance from the variety of shops, cafes and restaurants that Willesden Green has to offer. Willesden Green station (Jubilee line Zone 2) provides easy access to the City.

### Features

- Newly Renovated Ground Floor
- Two Double Bedrooms
- Open Plan Living Area
- Private Garden
- Share Of Freehold

# Lechmere Road, London, NW2



Total area (approx.): 83.0 sq. m (893.4 sq. ft)

**Dexters**

Cricklewood  
28-30 Cricklewood Broadway  
London  
NW2 3HD  
Sales  
020 7794 7710

Energy Rating: D. We aim to make our particulars both accurate and reliable. However they are not guaranteed; nor do they form part of an offer or contract. If you require clarification on any points then please contact us, especially if you're traveling some distance to view. Please note that appliances and heating systems have not been tested and therefore no warranties can be given as to their good working order.

 **RICS** | Regulated  
Estate Agent  
and Letting Agent

[dexters.co.uk](https://www.dexters.co.uk)