

## Lechmere Road, NW2

£650,000

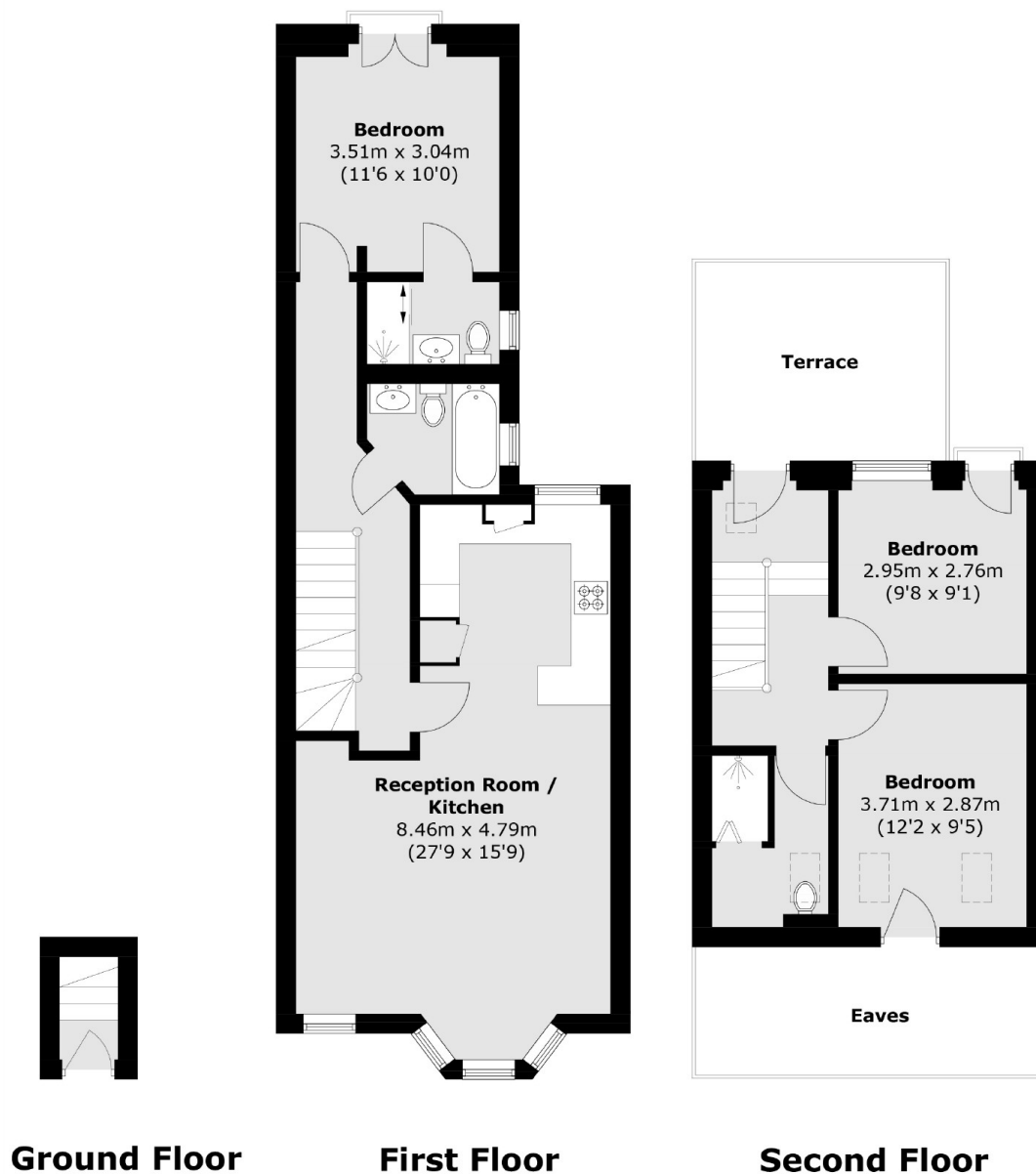
A three double bedroom, three bathroom split-level conversion measuring in excess of 1000 sq/ft and renovated to a high standard throughout. With an open plan living area with a well-fitted kitchen and a private roof terrace. The property comes with a share of the freehold and no onwards chain.

Lechmere Road is a quiet, residential street a short distance from the variety of shops, cafes and restaurants that Willesden Green has to offer. Willesden Green station (Jubilee line Zone 2) provides easy access to the City.

### Features

- Newly Renovated
- Split-Level
- Three Double Bedrooms
- Open Plan Living Area
- Roof Terrace
- Share Of Freehold

# Lechmere Road, London, NW2



Total area (approx.): 94.7 sq. m (1019.3 sq. ft)  
Terrace : 11.5 sq. m (123.7 sq. ft)